

2015 Southeast Stormwater Utility Survey

Presented by
David Mason, P.E.
CDM Smith



Acknowledgements

- Southeast Stormwater Association
- Responding SWU's
- Survey Sponsors



Survey Outline

- Utility Characteristics
- Utility Fees and Rates
- Stormwater Program
- Public Information

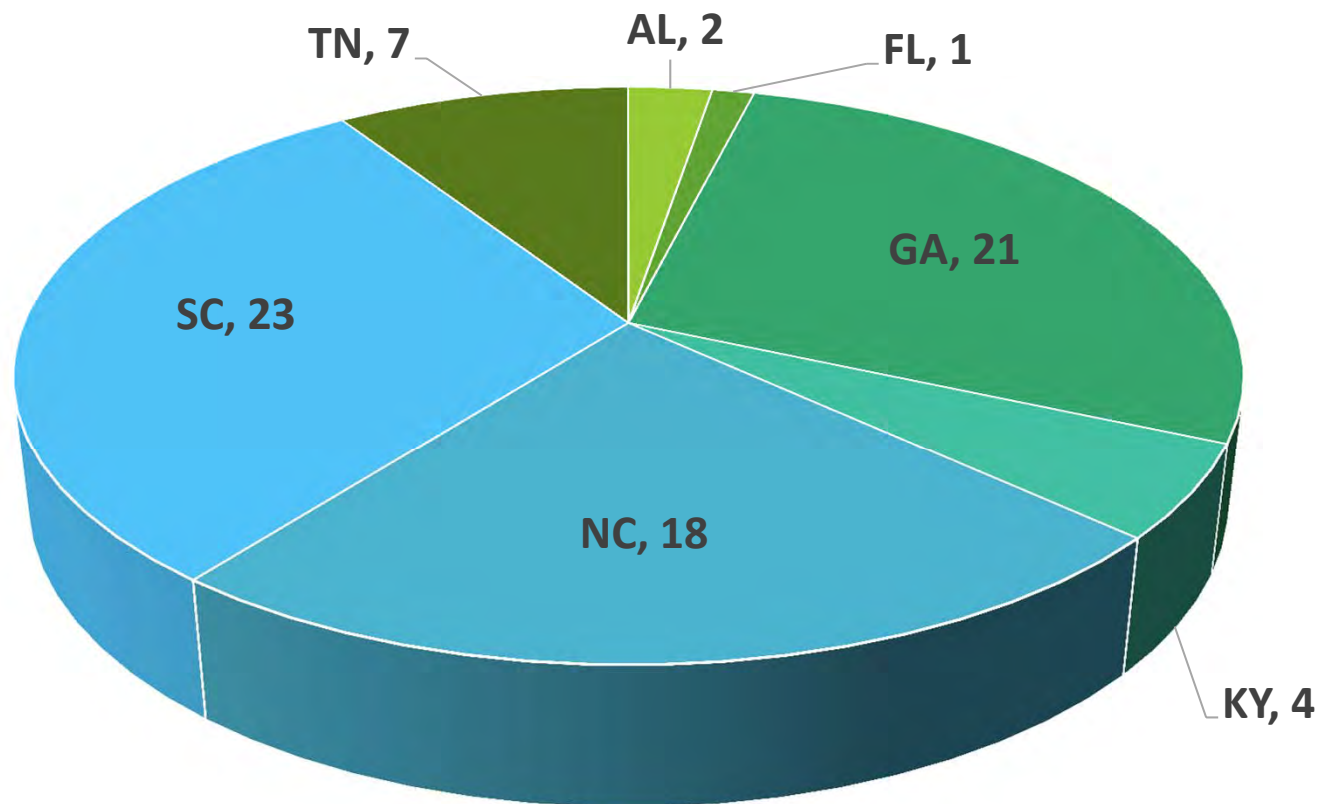


| 2015

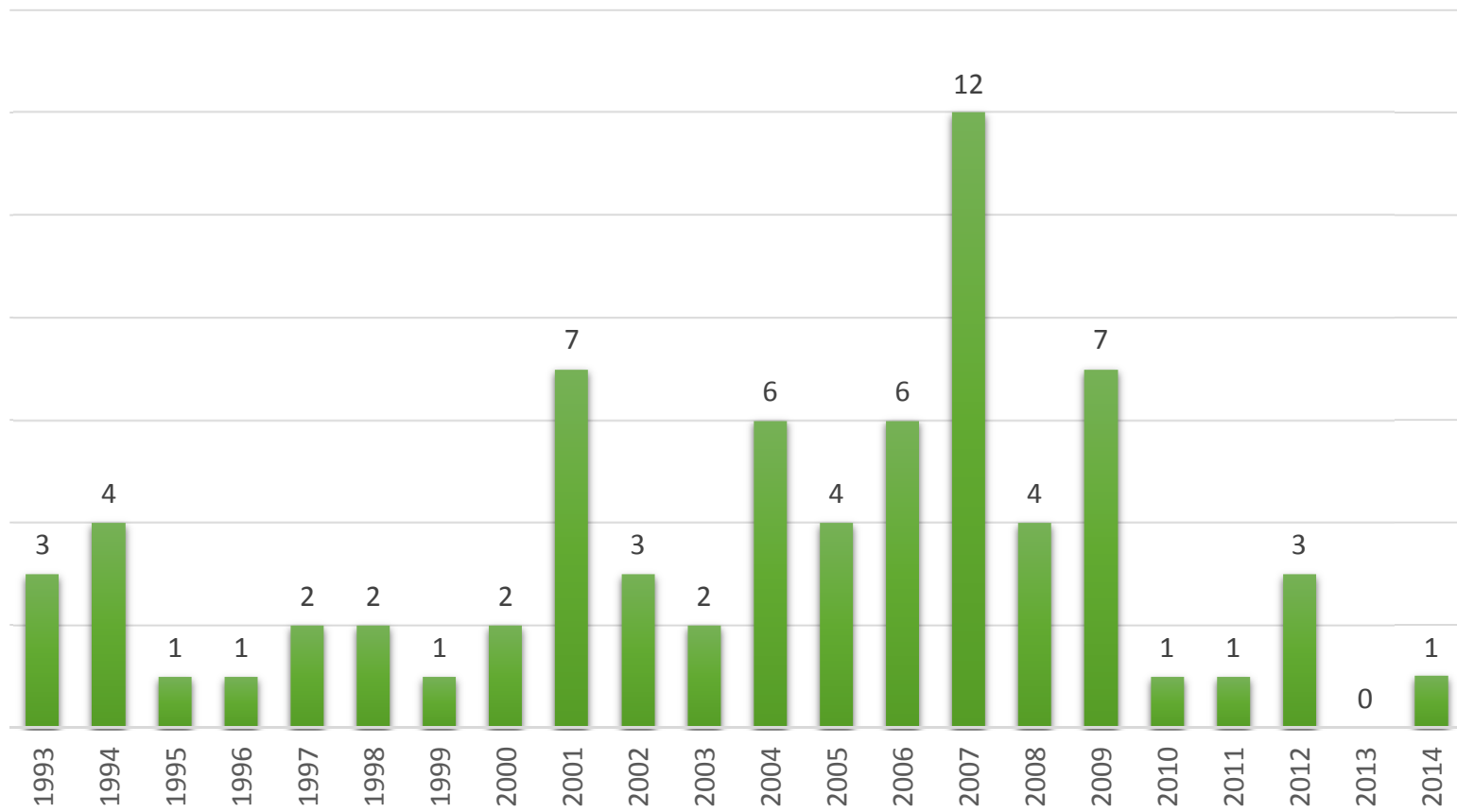


Celebrating our 10th Anniversary

Survey Respondents (76)

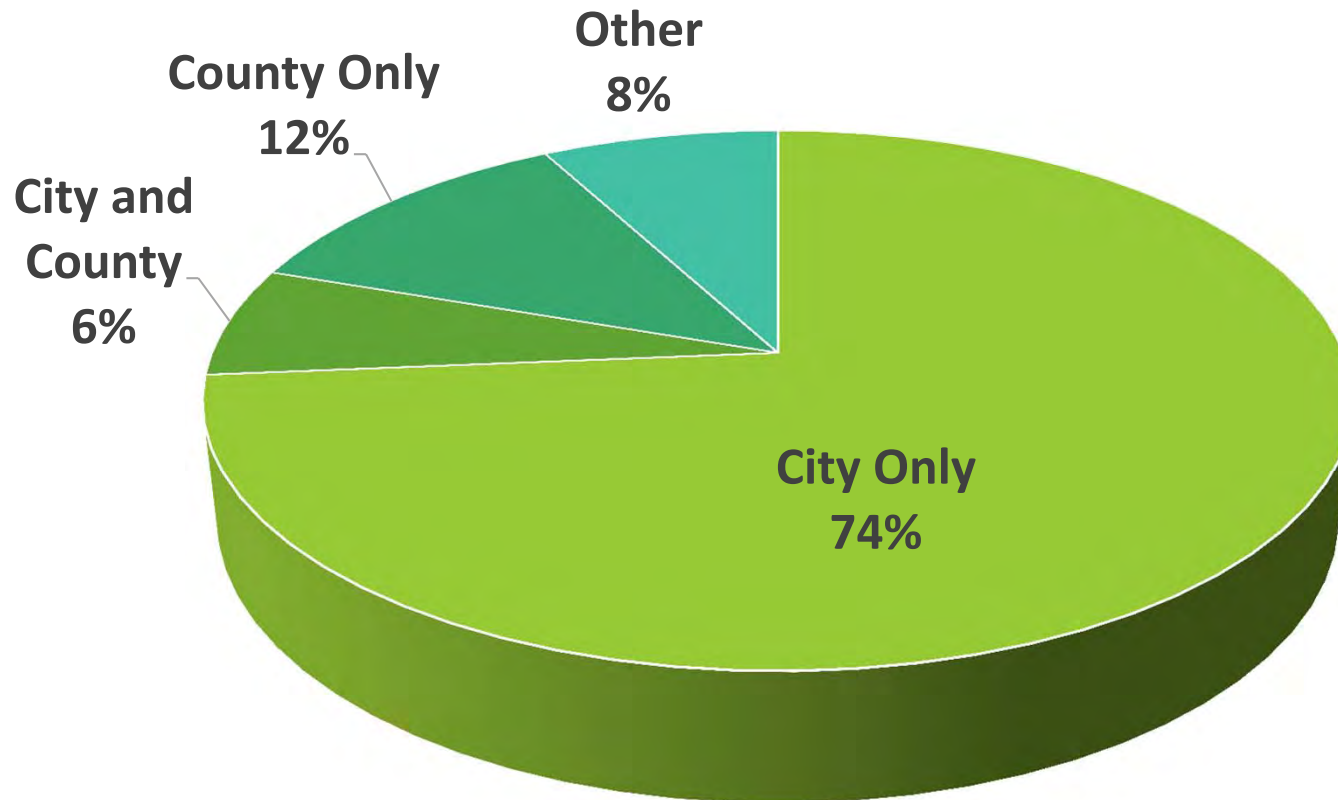


Year Established



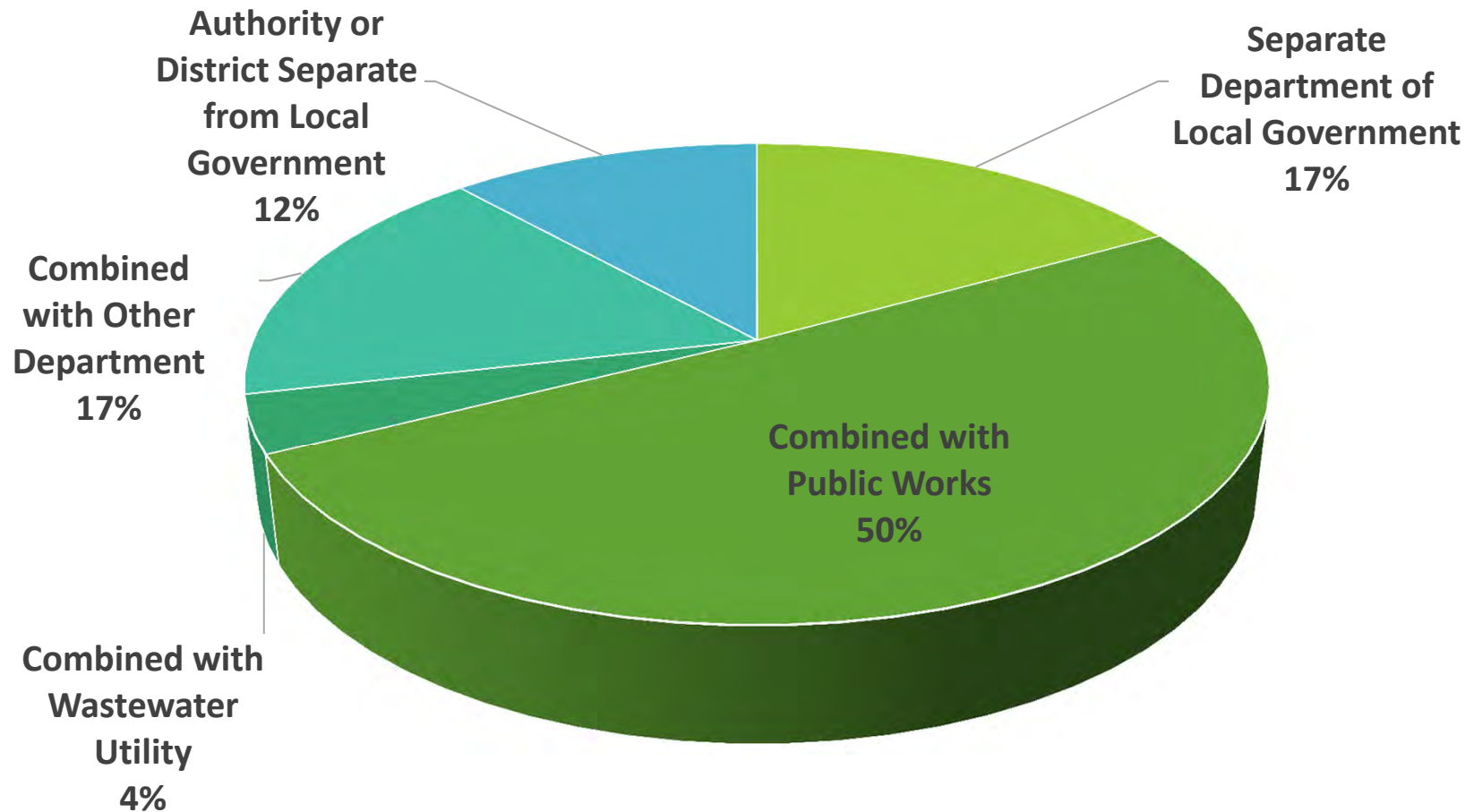
Service Area

“City Only”
represented
only 65% in the
2007 survey



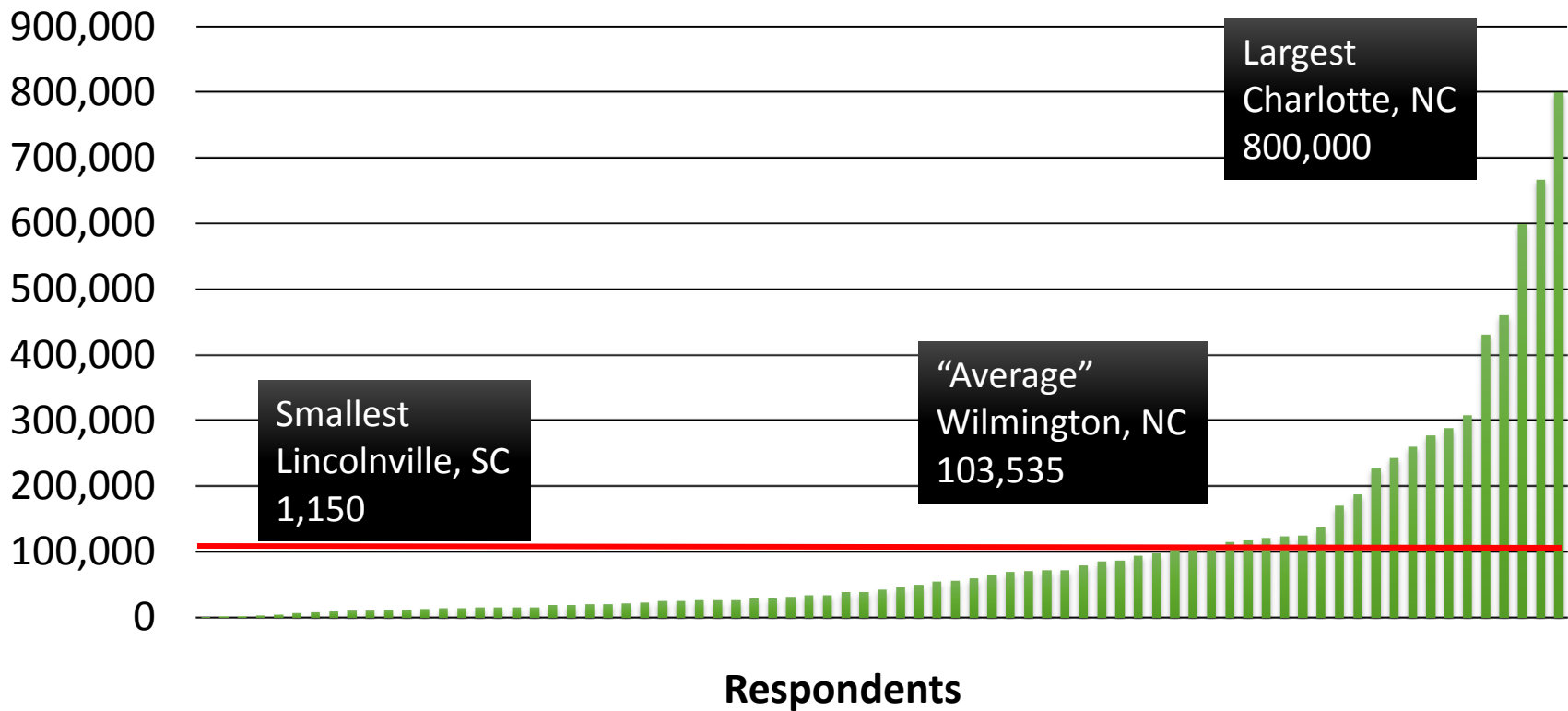
Utility Organization

Increases in “Public Works” or “Other Department” since the 2007 survey



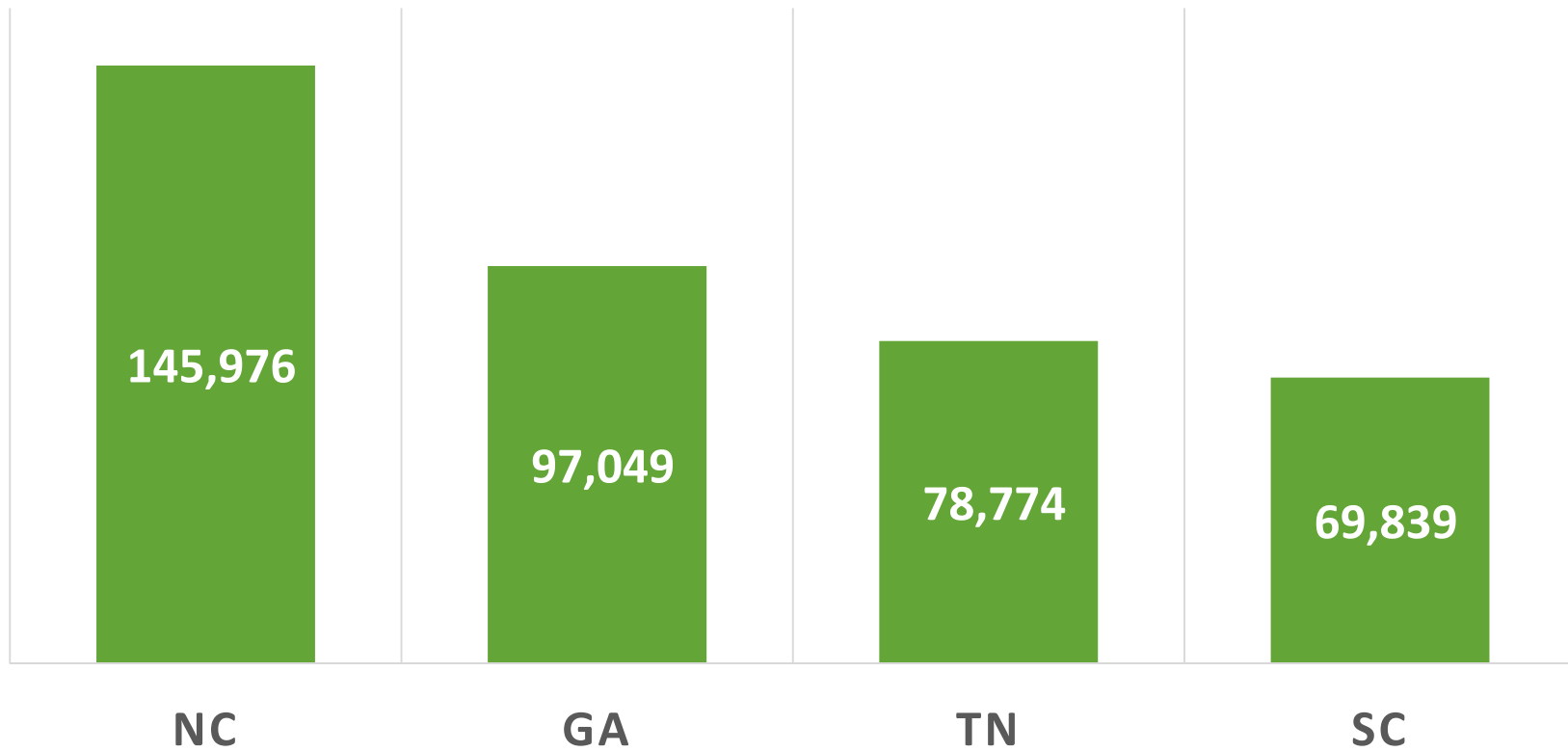
Population Served

Trending Down
2007 Avg = 135,392
2015 Avg = 103,535



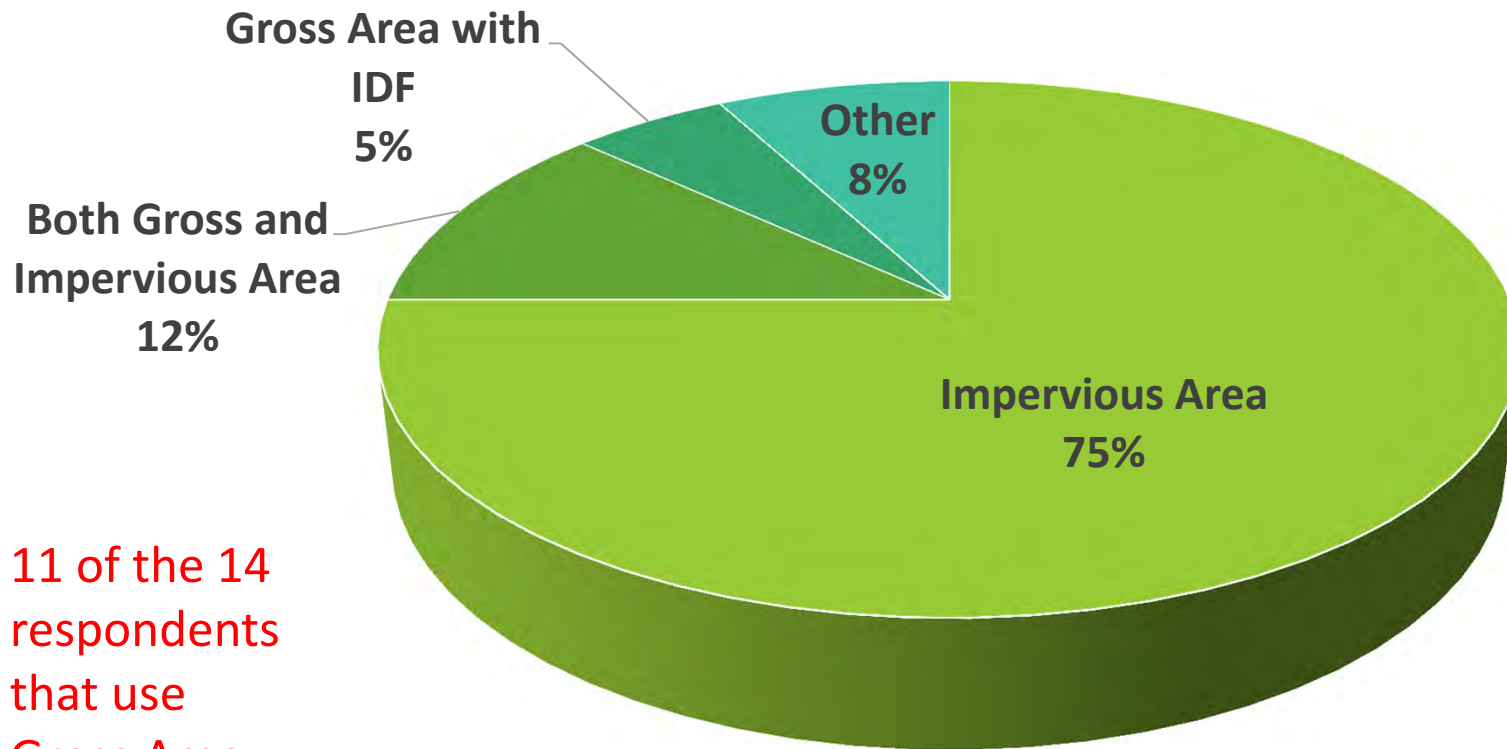
Population Served by State

AVERAGE POPULATION BY STATE



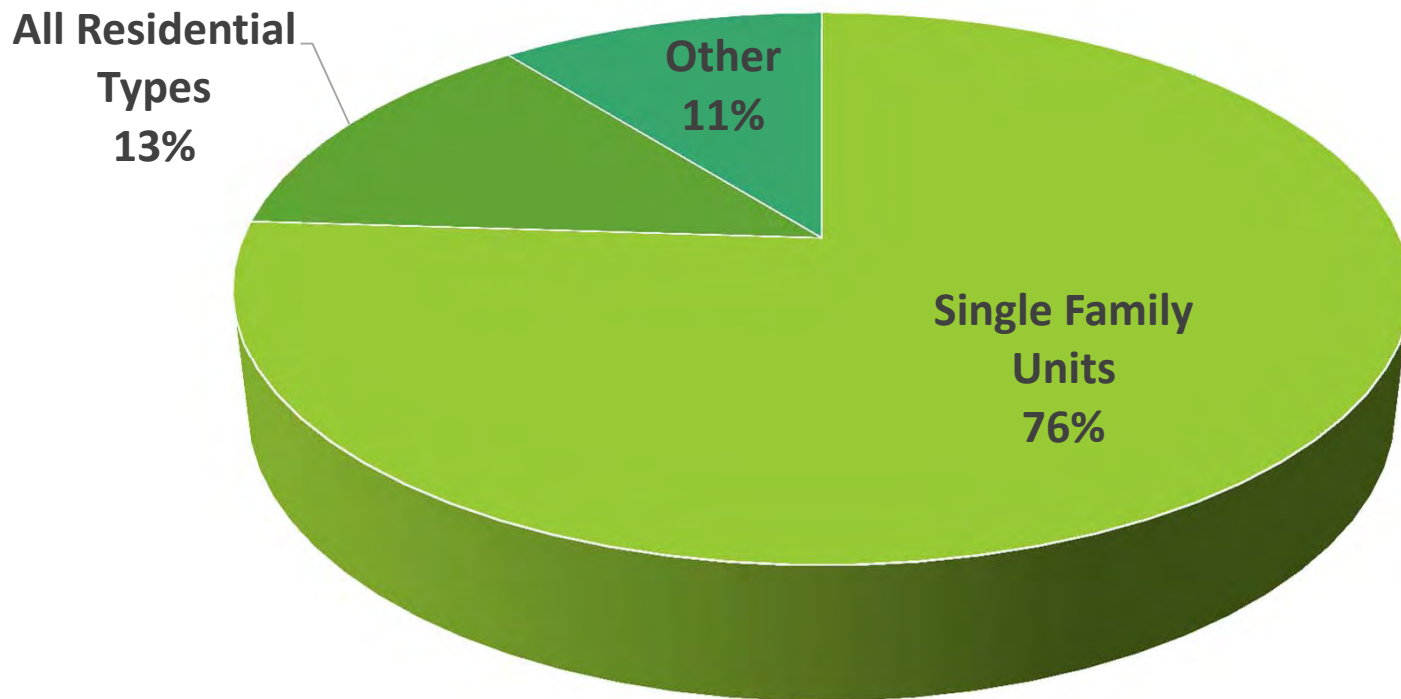
Basis of Fee

Use of Impervious Area as the basis is trending upward



11 of the 14 respondents that use Gross Area are from SC

Basis of Average Billing Unit



The highest percentages are SC (87%) and NC (82%)

Overall, the use of single family has increased from 69% in 2007



Fees Do Not Vary by Location within a Community

- Do Fees Vary by Watershed?
 - Only one....Rockdale County, GA
- Are Fees Charged Differently within a “Zone of Benefit?”
 - None.

Billing Unit (sq. ft.)

No Trends in Sq. Ft.

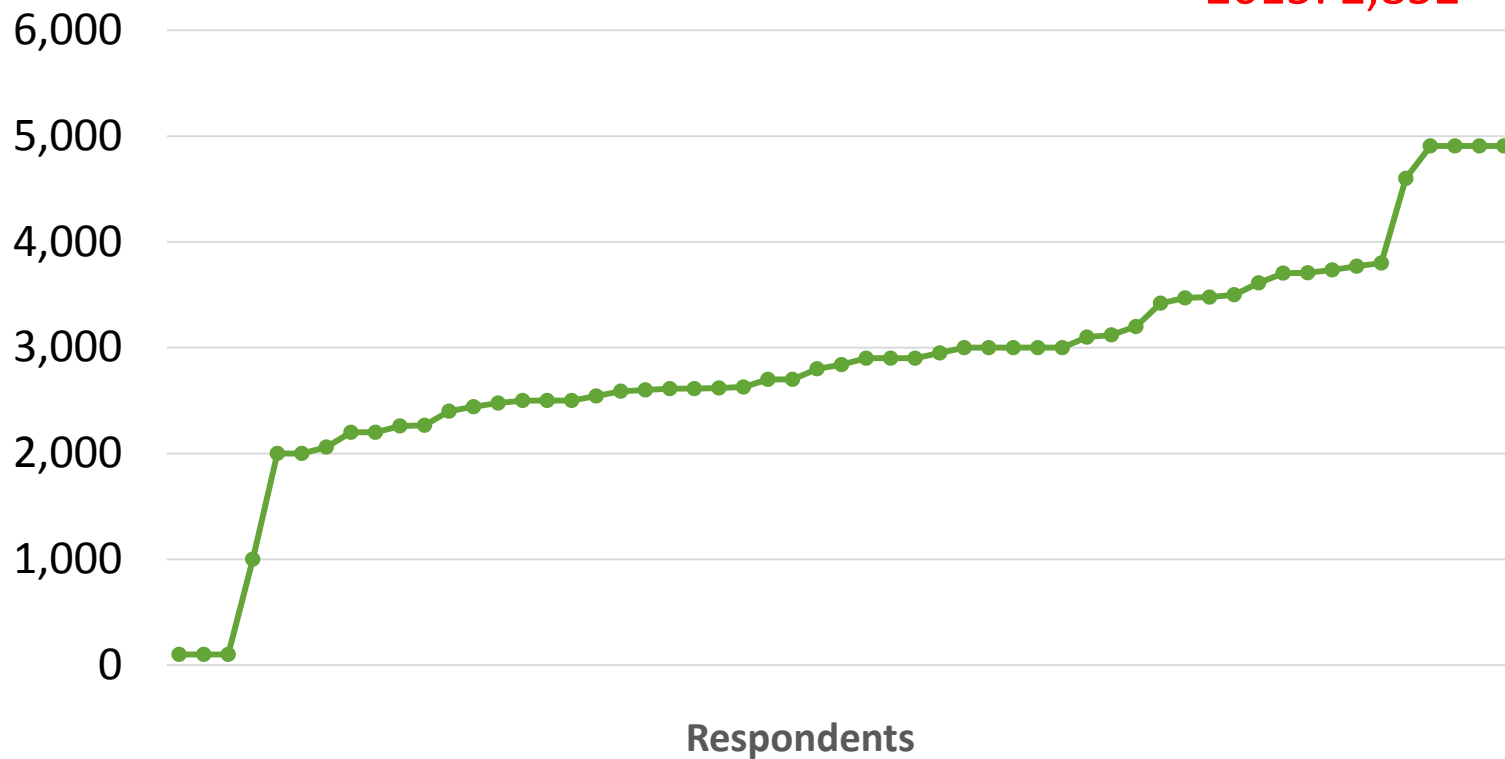
2007: 3,253

2009: 2,766

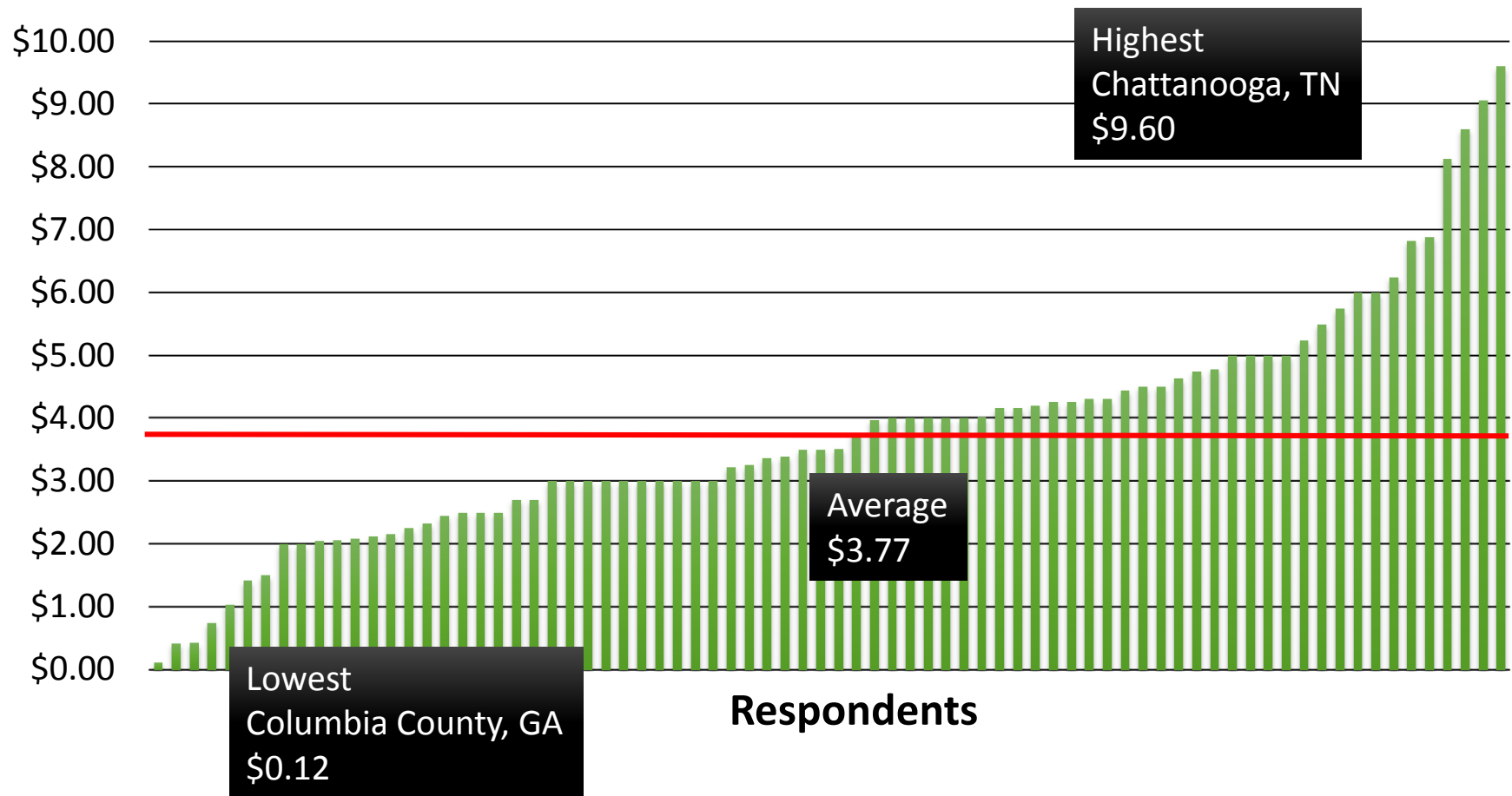
2011: 2,940

2013: 3,502

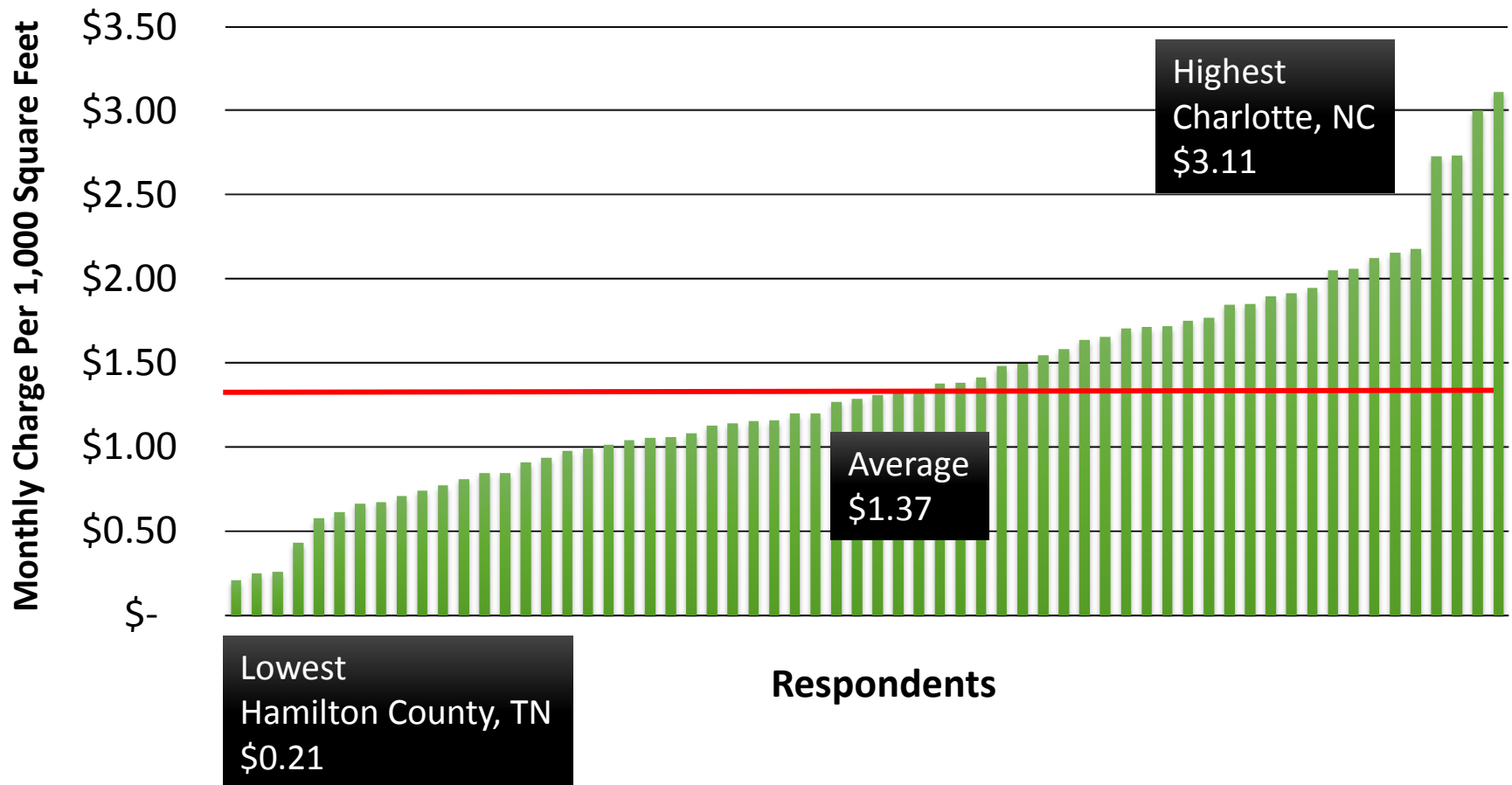
2015: 2,852



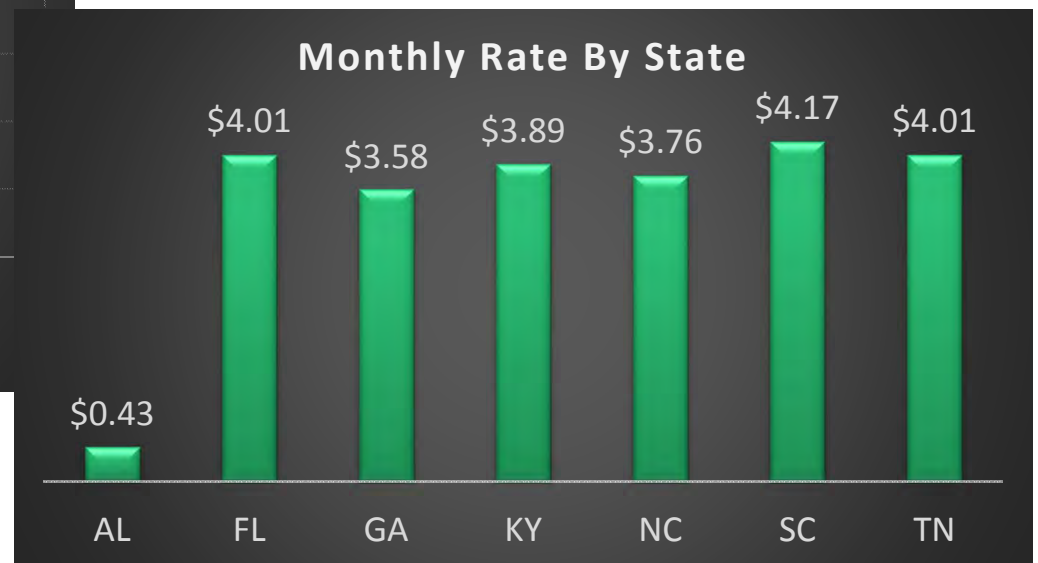
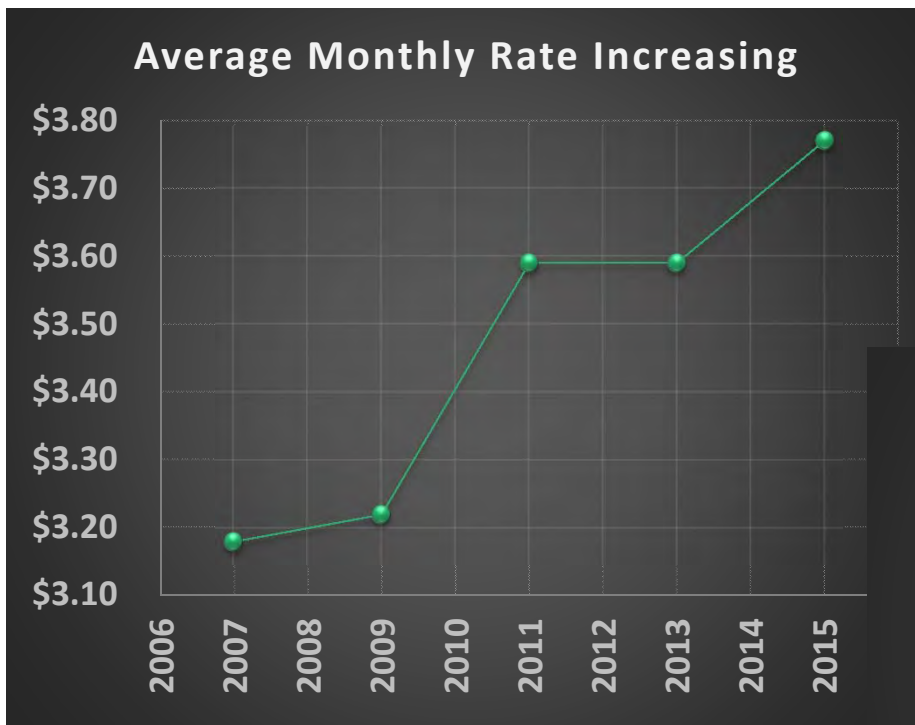
Average Monthly Billing Rates (\$/ERU)



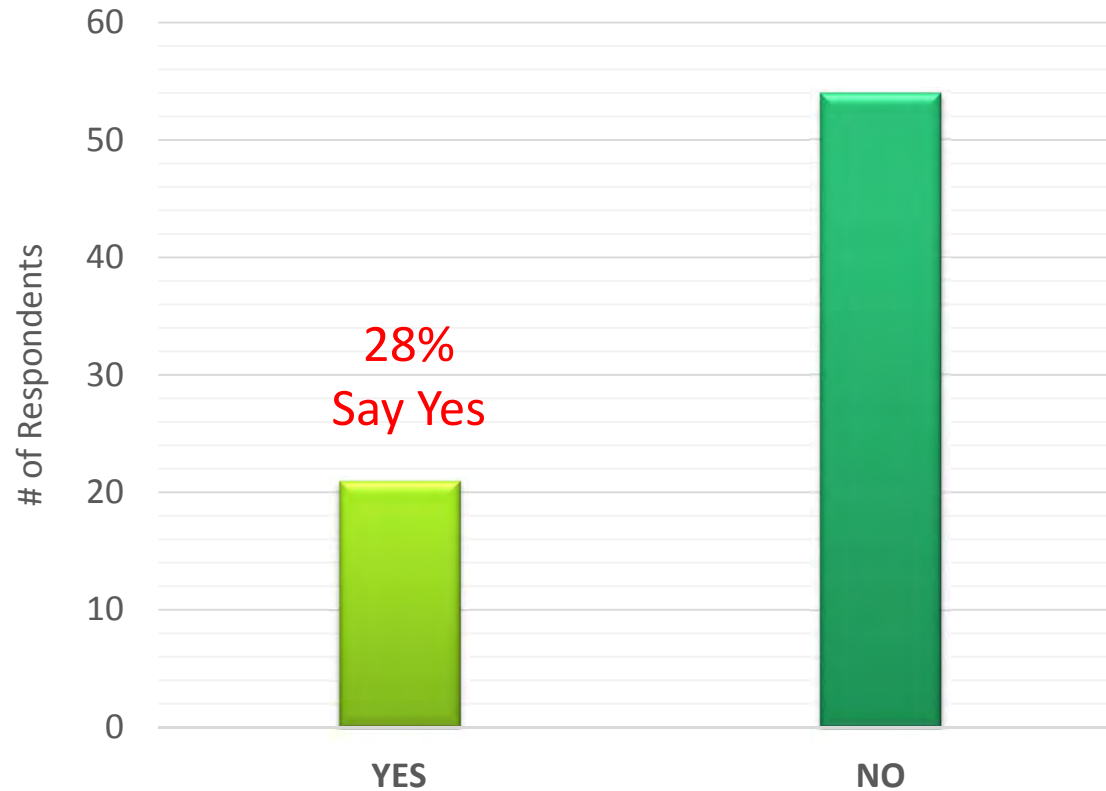
Standardized Monthly Billing Rates (\$ per 1,000 sq. ft.)



Trends In Monthly Rate Data

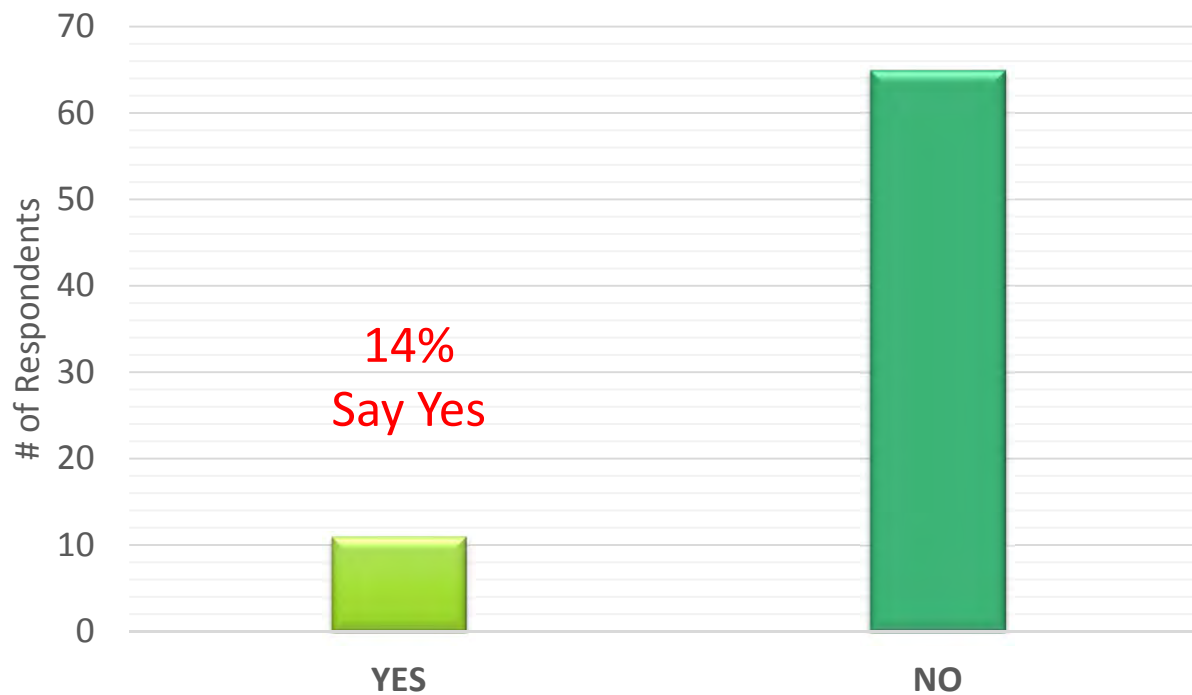


Interim Rates Prior to Adoption



Legal Challenges

Fees were upheld or settled in 10 of 11 cases. Final case is still pending

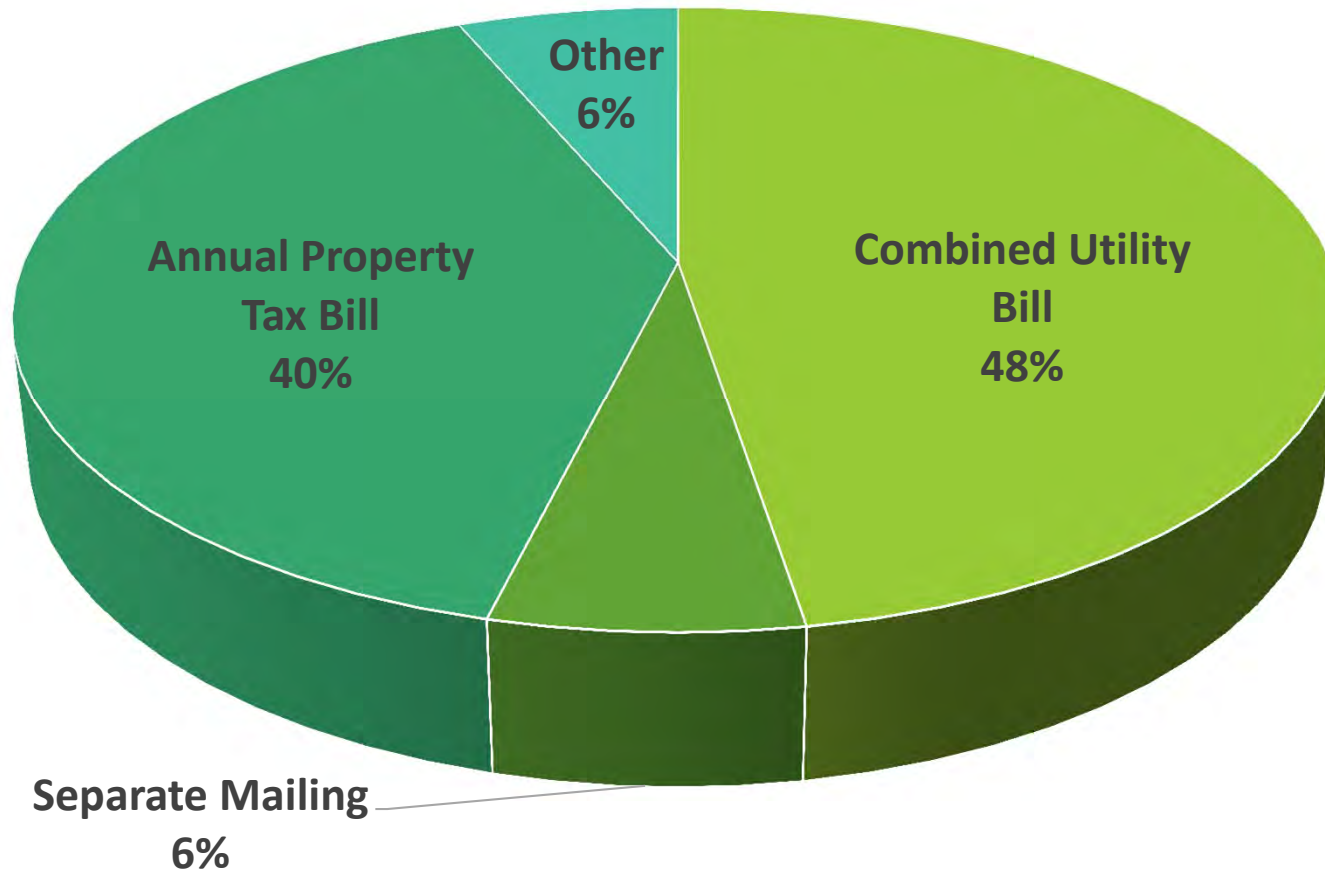


Questions About Utility Fees & Rates?

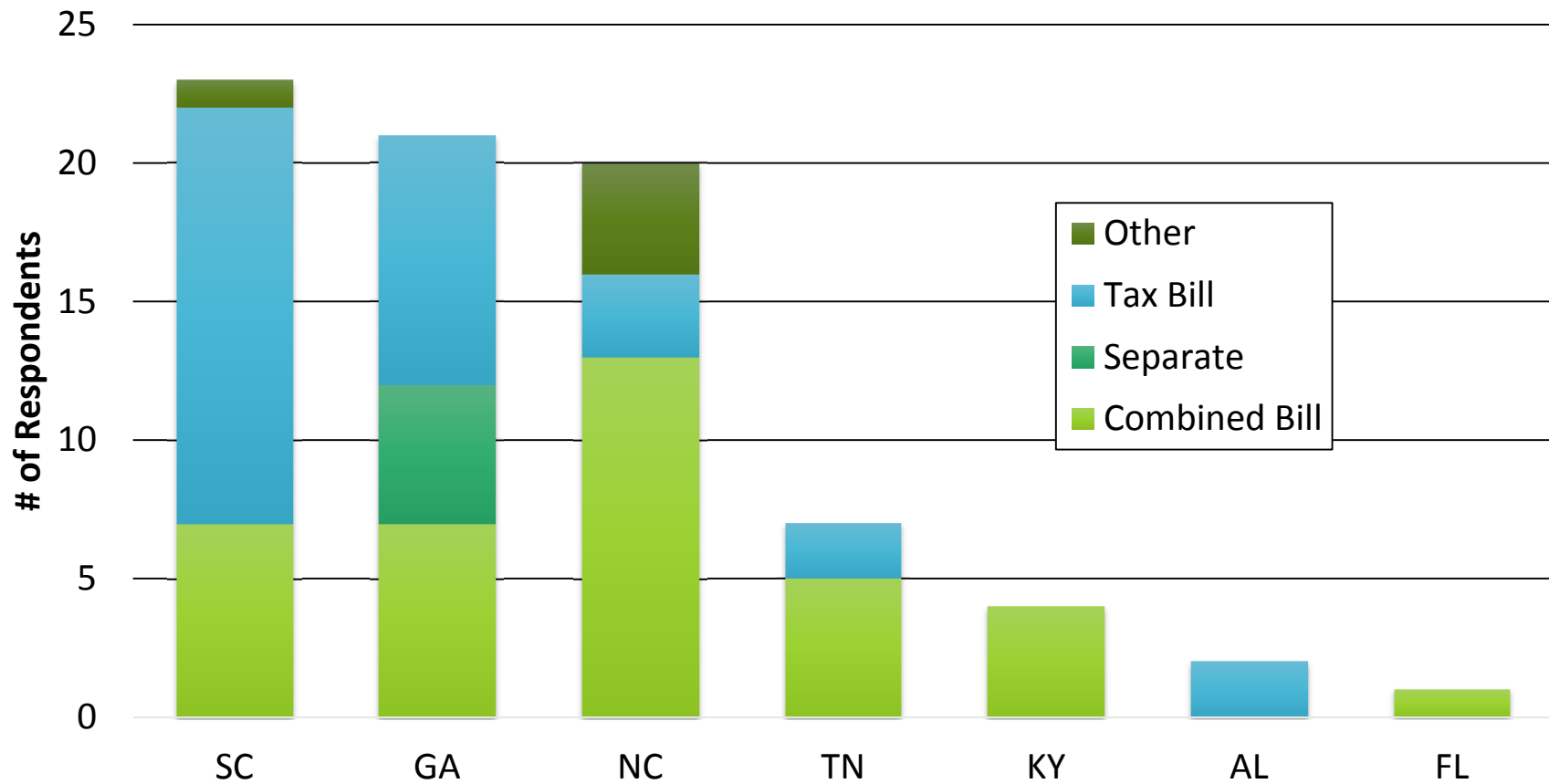


Method of Sending the Bill

In 2007,
Combined Bill
was 54%, Tax
Bill was 29%

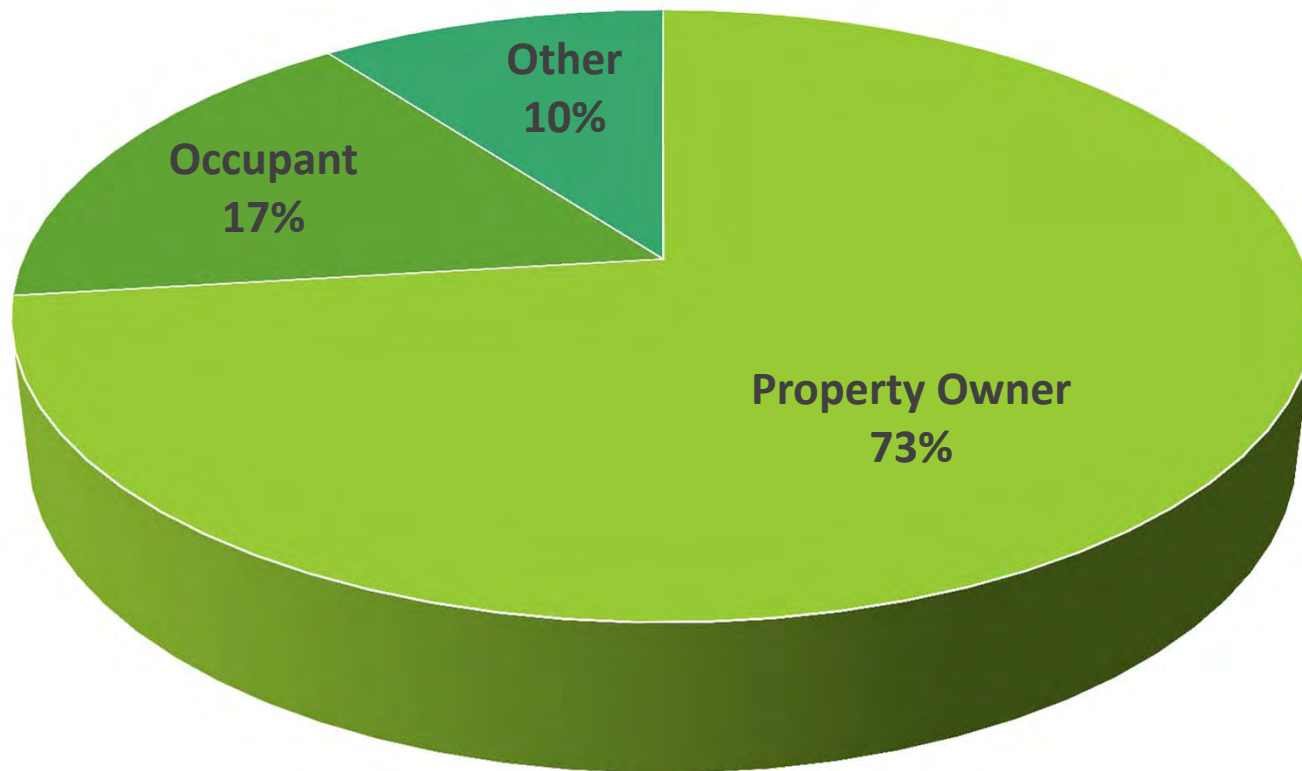


Billing Method by State



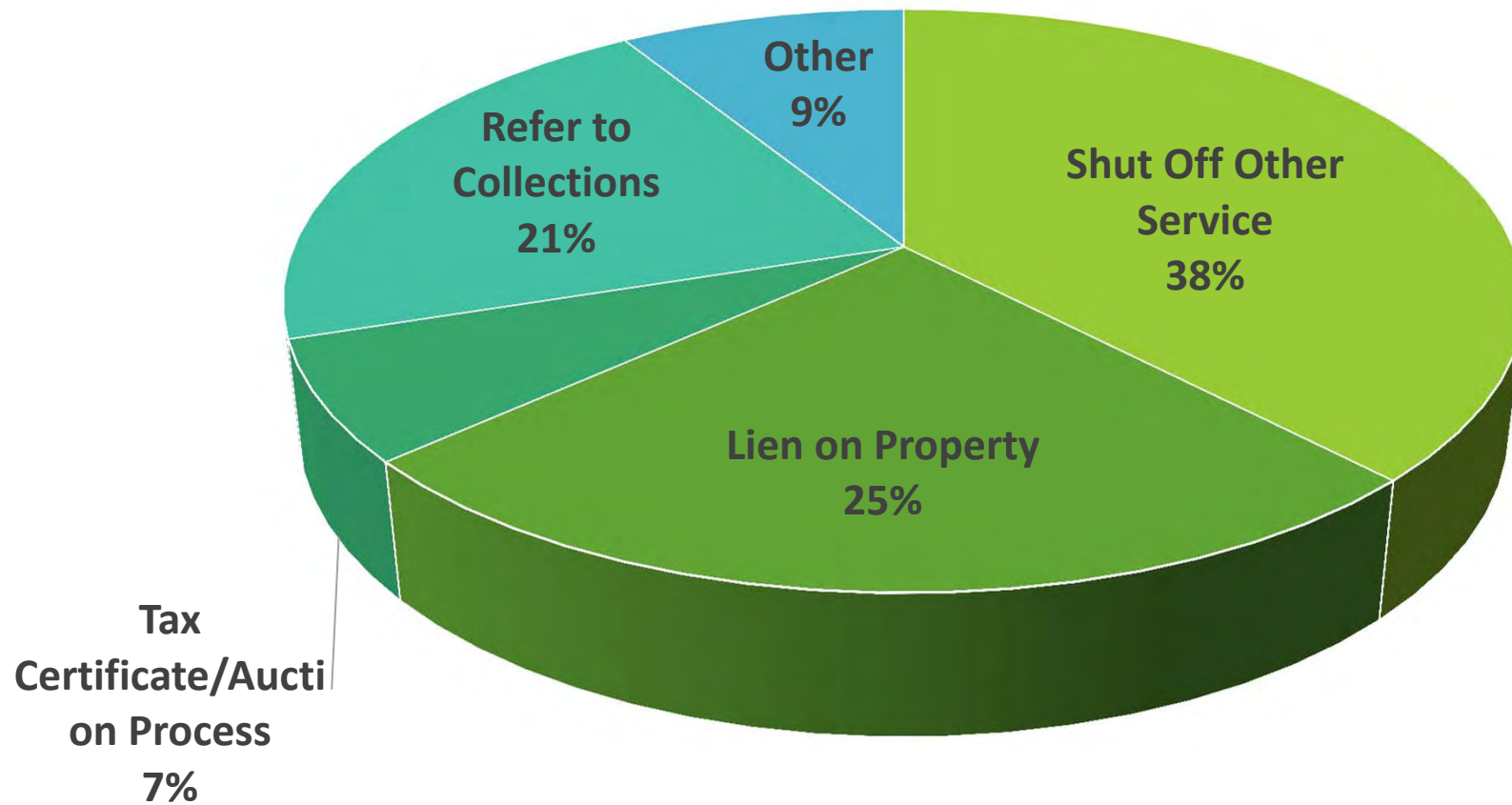
Who Pays the Bill?

Similar
distribution in
2007 survey

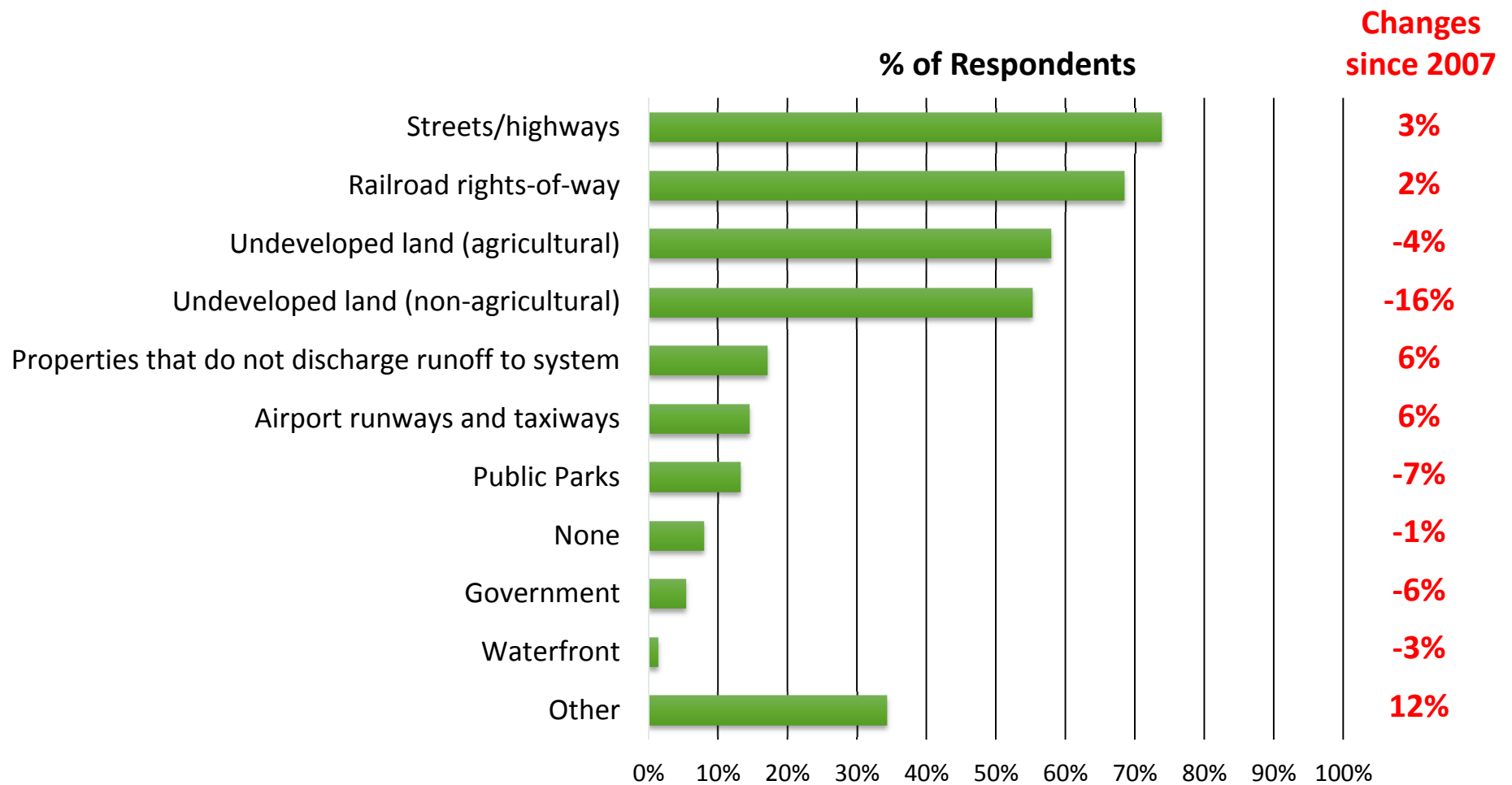


Enforcement

Similar
distribution in
2007 survey



Fee Exemptions



Billing Practices for Government Properties

Type	Exempt		Bill and collect		Bill but don't collect		Not billed	
	2007	2015	2007	2015	2007	2015	2007	2015
Federal	10%	3%	80%	83%	8%	11%	3%	3%
State	13%	4%	68%	81%	13%	9%	8%	6%
County	7%	3%	83%	94%	5%	3%	5%	0%
City	10%	6%	79%	88%	0%	3%	10%	3%
School District	8%	6%	93%	92%	0%	1%	0%	1%
Special District	0%	2%	96%	93%	0%	0%	4%	4%



Increasing



Decreasing

Statistics Re: Credits

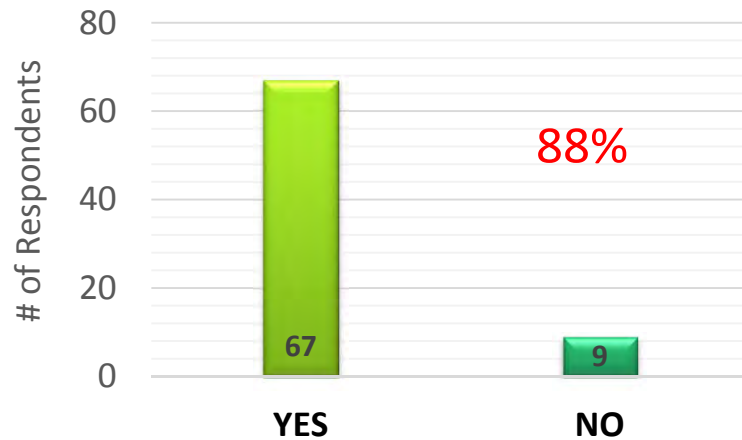
No significant
changes since
2007

- Average # of Accounts that Receive Credits: 2.15%
- Average Credit Reduction: 24.6%
- Possible Credit Range: 0% to 100%

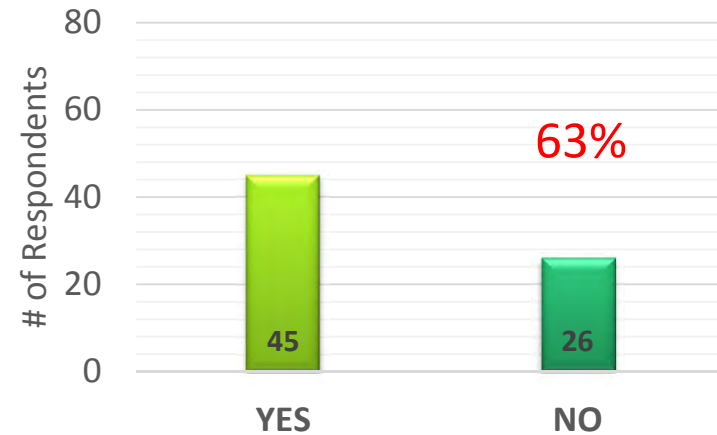


Credits for Private Detention Facilities

Local Code Requires
Private Detention Facilities

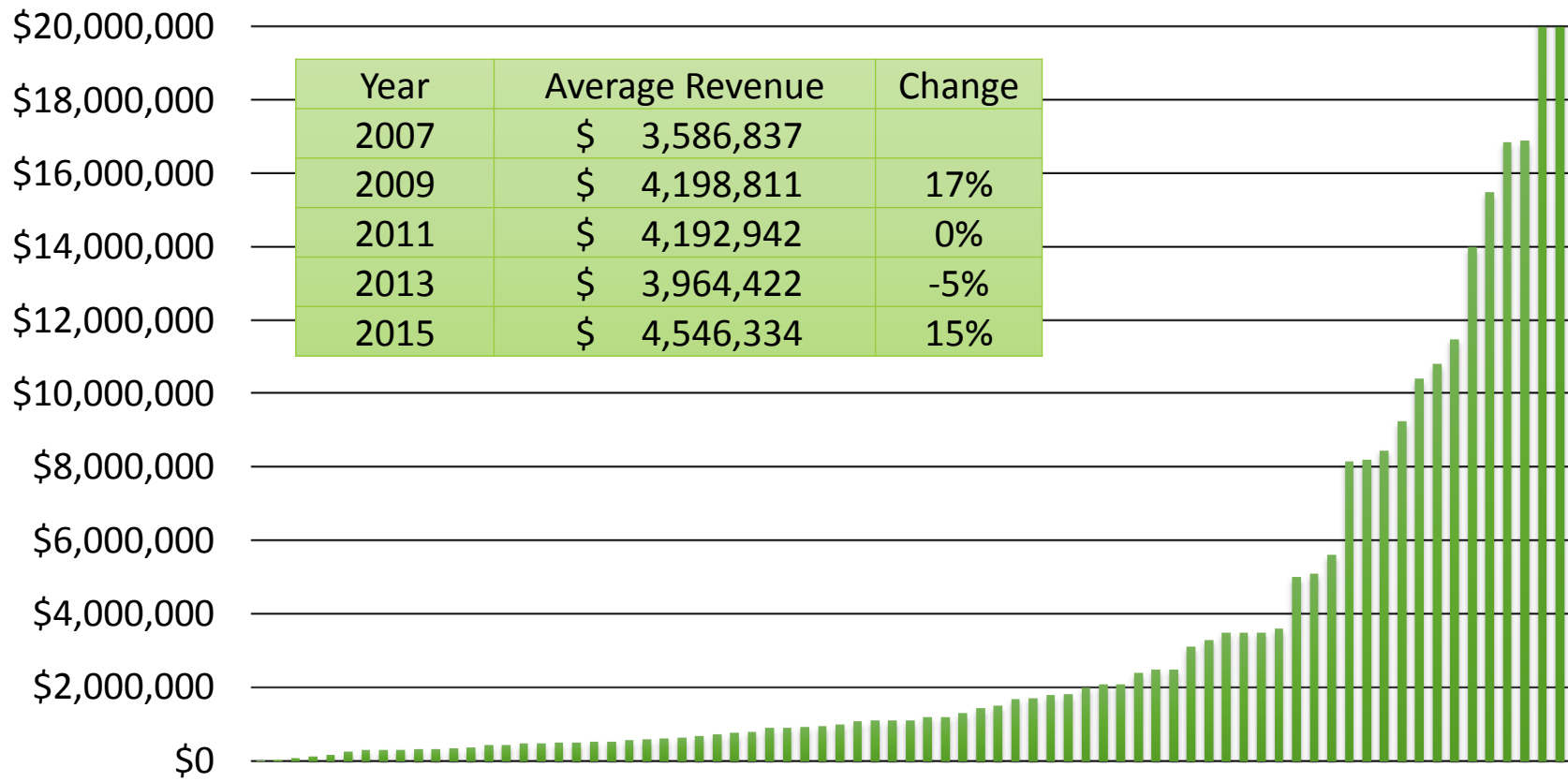


Credits Provided for
Private Detention Facilities



\$315M for 70 SWUs

Stormwater Utility Revenue

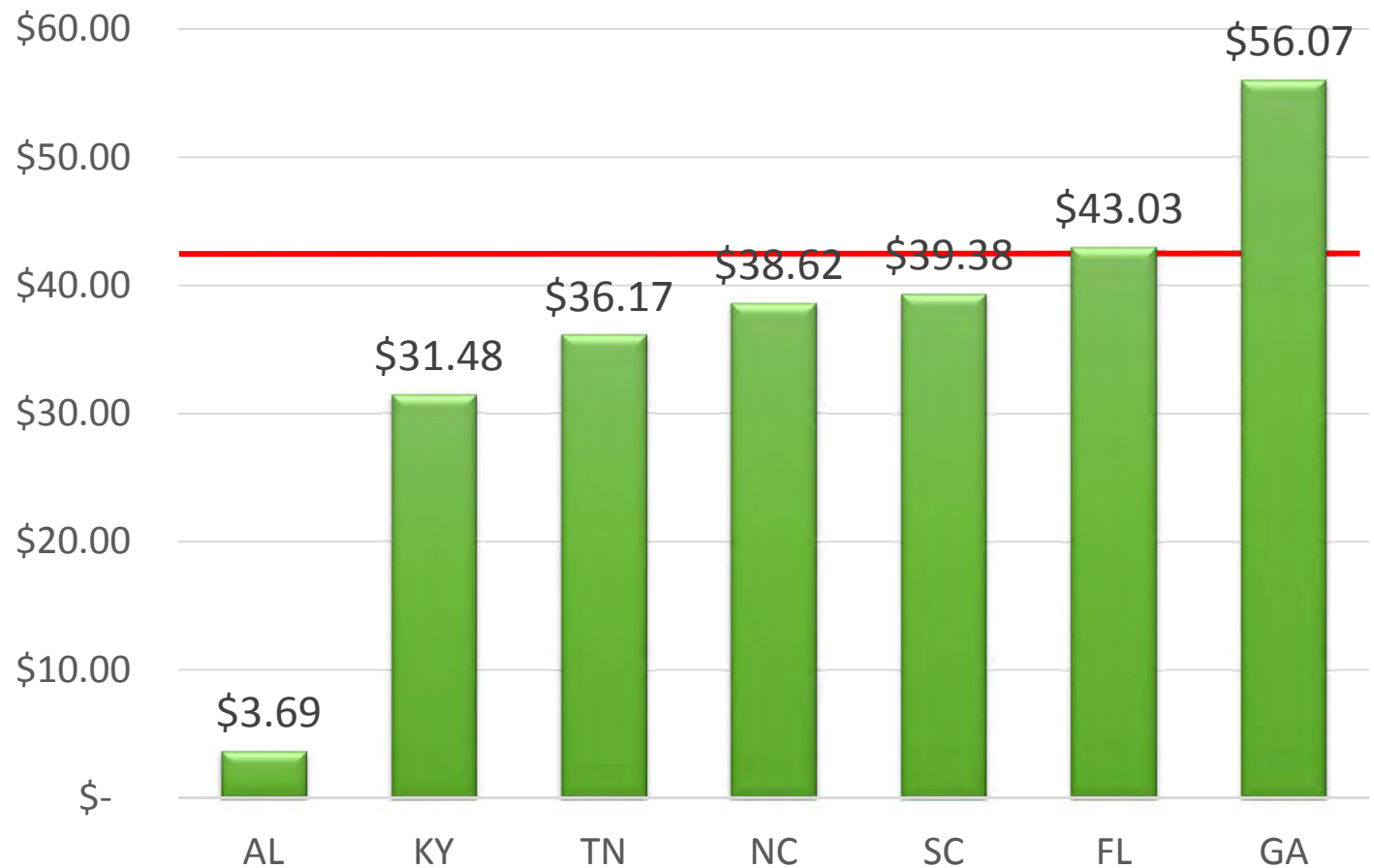


Charlotte, NC and Gwinnet County, GA not included in graph

2015 Per Capita Revenue

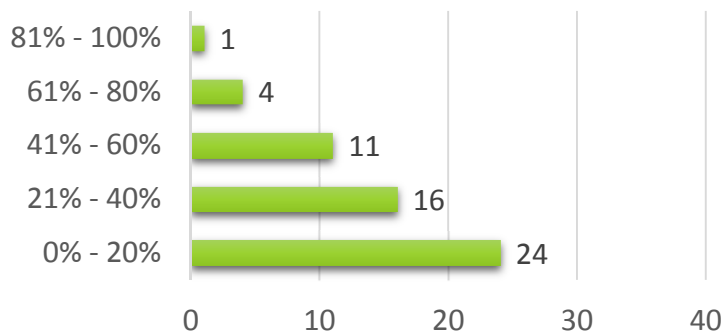
Average Per Capita Revenue in 2007 was \$32.50

All Respondents
Max - \$348.31
Avg - \$42.59
Min - \$0.03

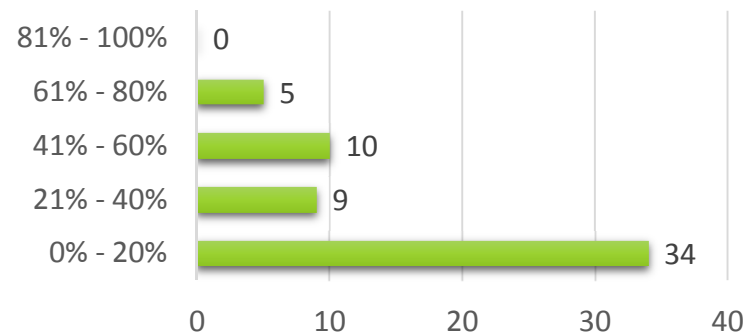


Percent of Budget for Program Areas

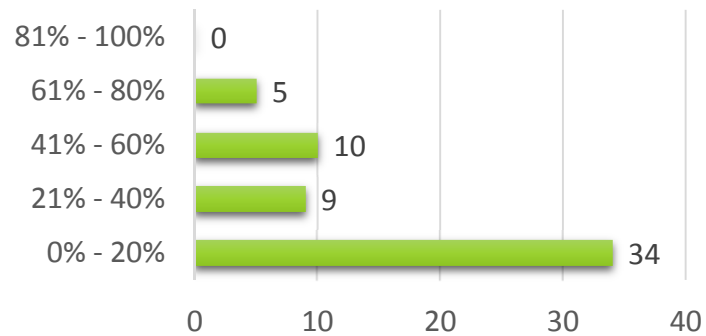
O&M Activities



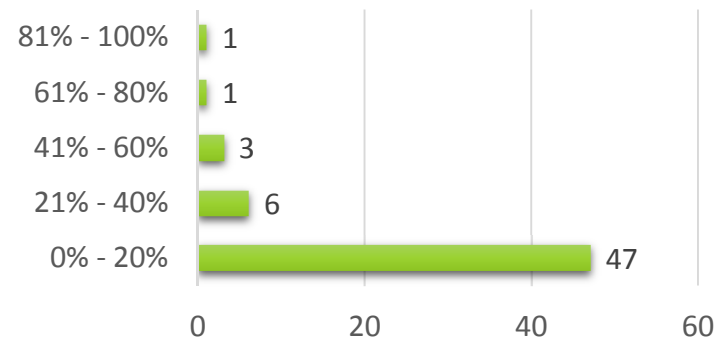
Technical/Planning



Capital Improvements



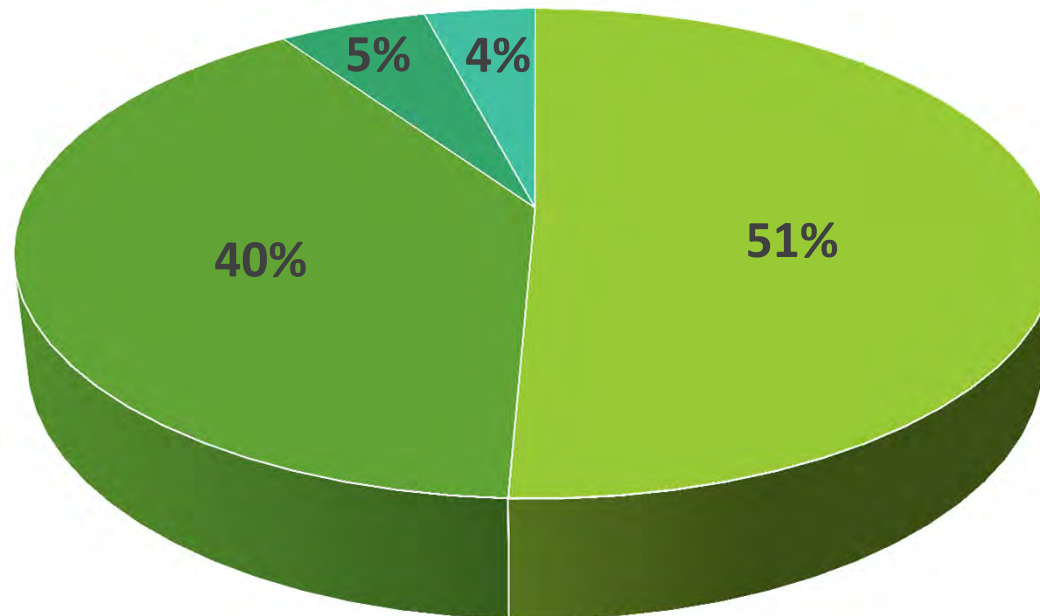
NPDES MS4 Permitting



Adequacy of Fees

Similar distribution
in 2007

Administrative Costs



■ Meets All Needs

■ Meets Most Needs

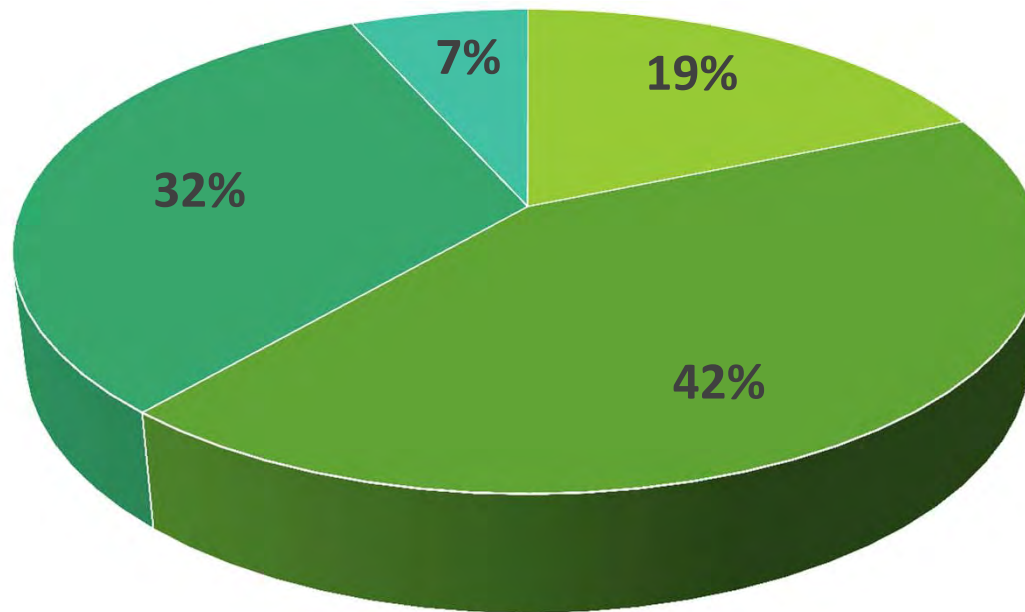
■ Meets Most Urgent Needs

■ Not Adequate for Urgent Needs

Adequacy of Fees

Similar distribution
in 2007

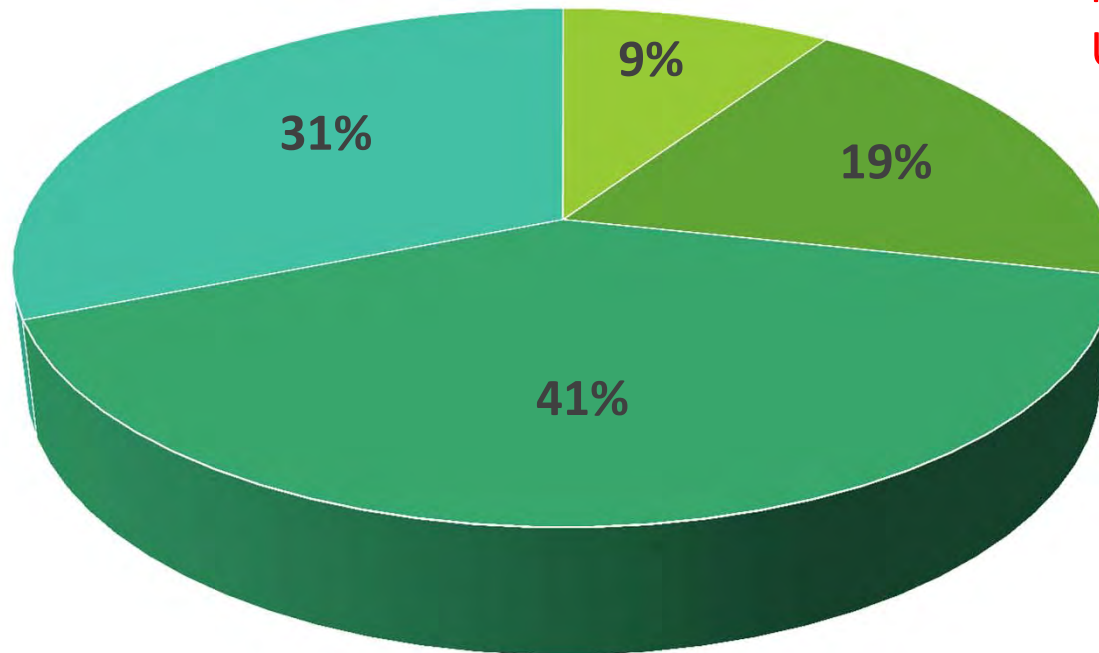
Operations & Maintenance Costs



- Meets All Needs
- Meets Most Needs
- Meets Most Urgent Needs
- Not Adequate for Urgent Needs

Adequacy of Fees

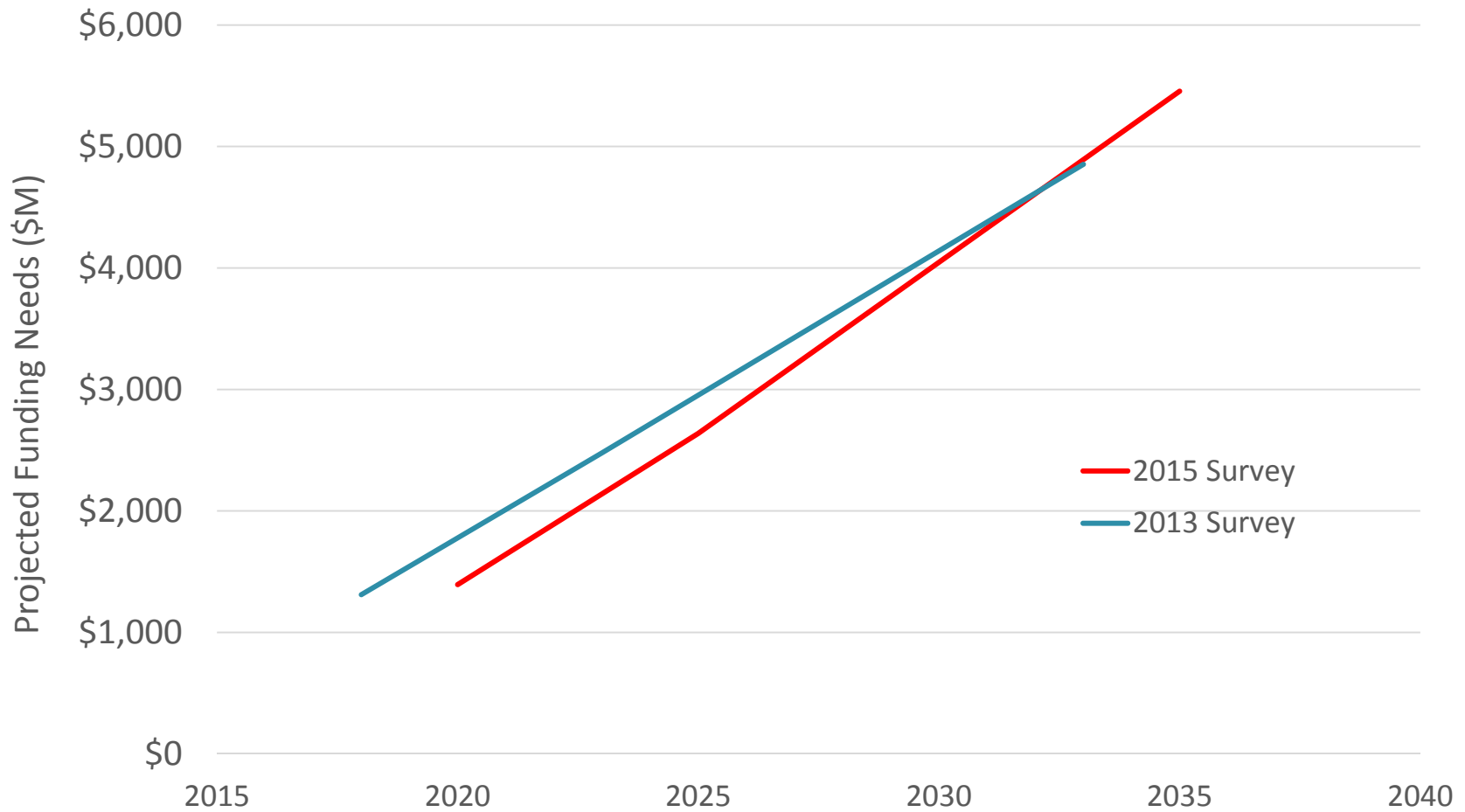
Capital Construction



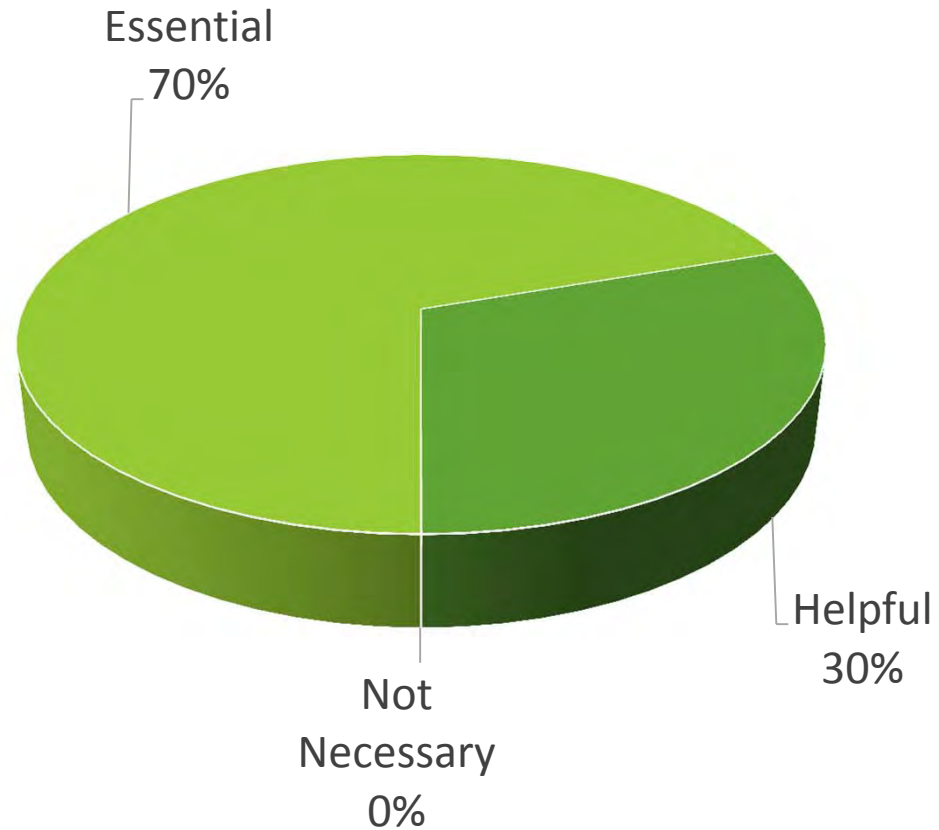
- Meets All Needs
- Meets Most Needs
- Meets Most Urgent Needs
- Not Adequate for Urgent Needs

Top categories remain similar, but 7% increase in “Not Adequate” and 10% decrease in “Meets Most Urgent” since 2007

Projected Future Capital Needs

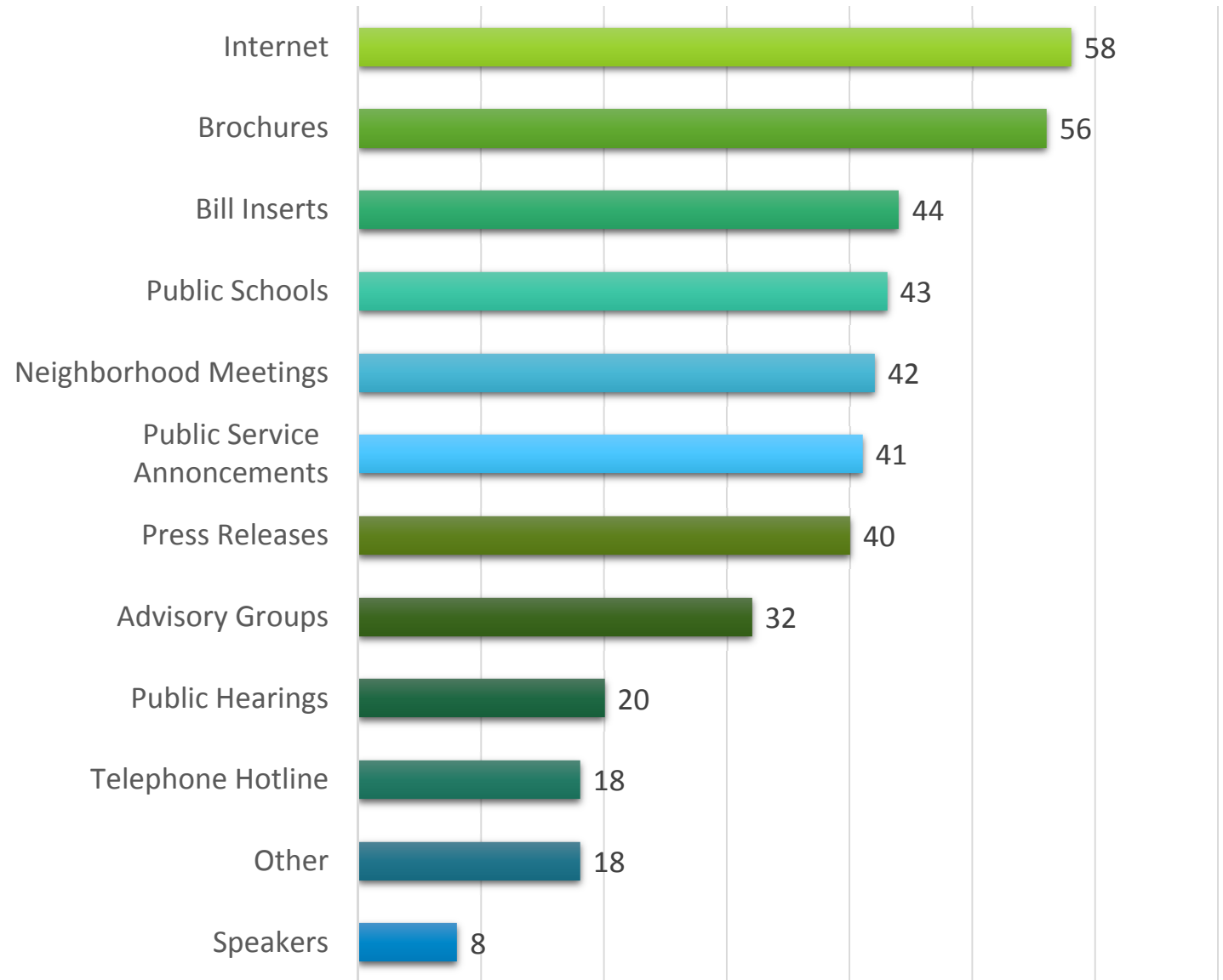


How Important is Public Education?



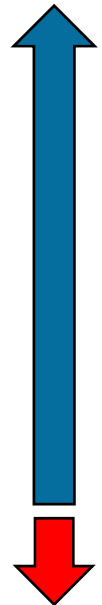
Reporting as
"Essential" has
grown by 11%
since 2007

Most Effective Methods for Public Education



Other Interesting Stormwater Survey Tidbits

Survey Question	2007	2015
Require O&M Permits for Private BMPs	64%	88%
Have an Adopted Stormwater Master Plan	42%	59%
Is Local Comprehensive Plan Coordinated with Master Plan	83%	93%
Is Operating Budget Funded Only From Fee Revenue	70%	79%
Monitor Water Quality Improvements	69%	75%
100% of System Mapped	20%	53%
Average Reported FTEs Funded	22	20





Questions?

