



*12th Annual Regional Conference
October 2017*

Mary Walker

*Region 4 Water Protection Division Director
U.S. Environmental Protection Agency*

Agency Transition Update

Office of Water

- **Lee Forsgren**
 - *Deputy Assistant Administrator, currently on-board*
- **David Ross**
 - *Nominee for Assistant Administrator*
 - *Pending Confirmation*

Office of Enforcement and Compliance Assistance

- **Susan Bodine**
 - *Nominee for Assistant Administrator*
 - *Pending Confirmation*
 - *Former AA for Office of Solid Waste and Emergency Response*



Government Reform



- ***Executive Order 13771***
 - Reducing Regulation and Controlling Regulatory Costs
 - Two for One Requirement
 - EPA Public Comment Period and Review of Comments
- ***Executive Order 13781***
 - Reorganizing the Executive Branch
 - EPA identified 11 priority areas
 - ✓ *Infrastructure – Community Investment*
 - ✓ *Expediting Permit Issuance*
 - ✓ *Mandatory Industry Reporting*

Waters of the US (WOTUS)



- ***By Executive Order***
 - EPA and the Army “shall consider interpreting the term ‘navigable waters’” in a manner “consistent with Justice Scalia’s opinion”
- ***Two Step Process***
 - Step One
 - ✓ Interim Step that Would Re-codify the Regulatory Text that Existed Prior to 2015
 - Step Two
 - ✓ Rulemaking Revising the Definition of “Waters Of The U.S.”
- ***For more information: www.epa.gov/wotus-rule***

Waters of the US (WOTUS)

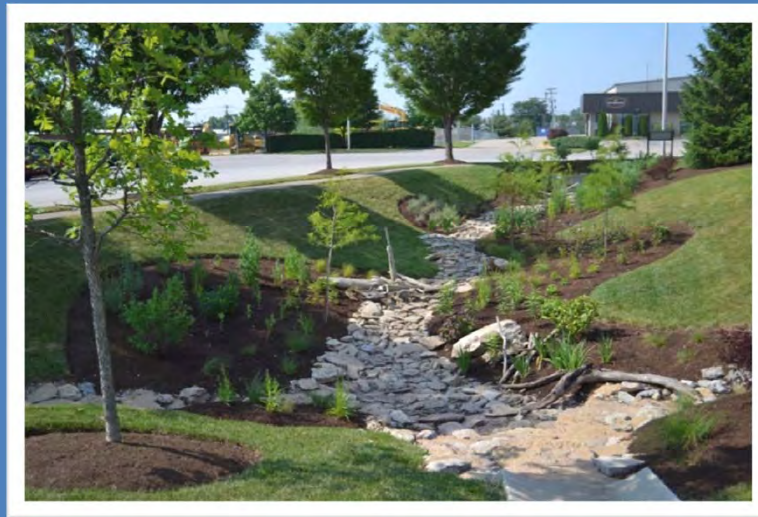
- *Public Comment Opportunities*

- For Step Two

- ✓ Listening sessions to give stakeholders an opportunity to provide pre-proposal recommendations
- ✓ **November 14th (1:00-3:00pm EST) Webinar** for Stormwater, Wastewater and Drinking Water Agencies
- ✓ **October 23rd (9:00-11:00am EST) in-person meetings** with small entities at U.S. EPA's Headquarters in D.C.
- ✓ **To register:** www.epa.gov/wotus-rule
(Registration closes a week prior to the event)



Community-Based Solutions for Stormwater Management





COMMUNITY SOLUTIONS FOR STORMWATER MANAGEMENT

A Guide for Voluntary Long-Term Planning



 United States
Environmental Protection
Agency

Office of Water
October 2016

www.epa.gov/npdes/stormwater-planning

DRAFT



Fall 2016, EPA released a [Guide for Voluntary Long-Term Stormwater Planning](#)

The guide describes how to align stormwater management with a community's broader plans for economic development, transportation and other infrastructure investments.

Benefits of Long-Term Stormwater Plans

- Long-term stormwater approaches and investment in infrastructure provide opportunities to leverage funding, reduce costs and lead to multiple community benefits.
 - Avoid missed opportunities to build multi-benefit projects by syncing capital improvements, like road improvements and downtown revitalization, with stormwater controls to control flooding and pollution- *get the biggest bang for the buck.*
 - Explore asset management programs and sustainable financing strategies that build capacity to support reliable infrastructure.
- Communities cannot afford to wait to address the flooding and public health hazards of stormwater.

Reliable
infrastructure

Cost savings

Flood risk
reduction

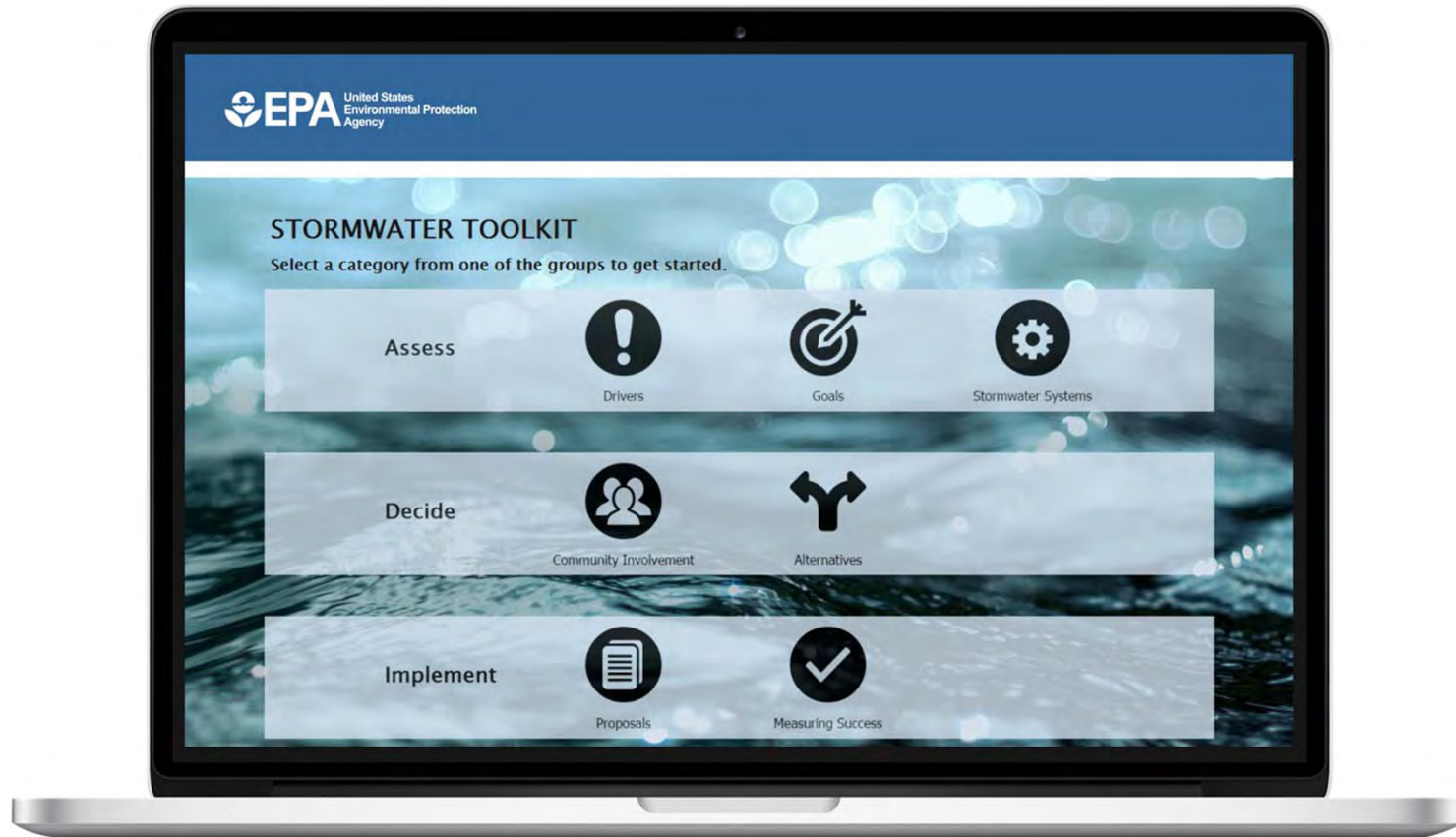
Neighborhood
amenities

New
Businesses

Recreational
opportunities

Improved
resiliency

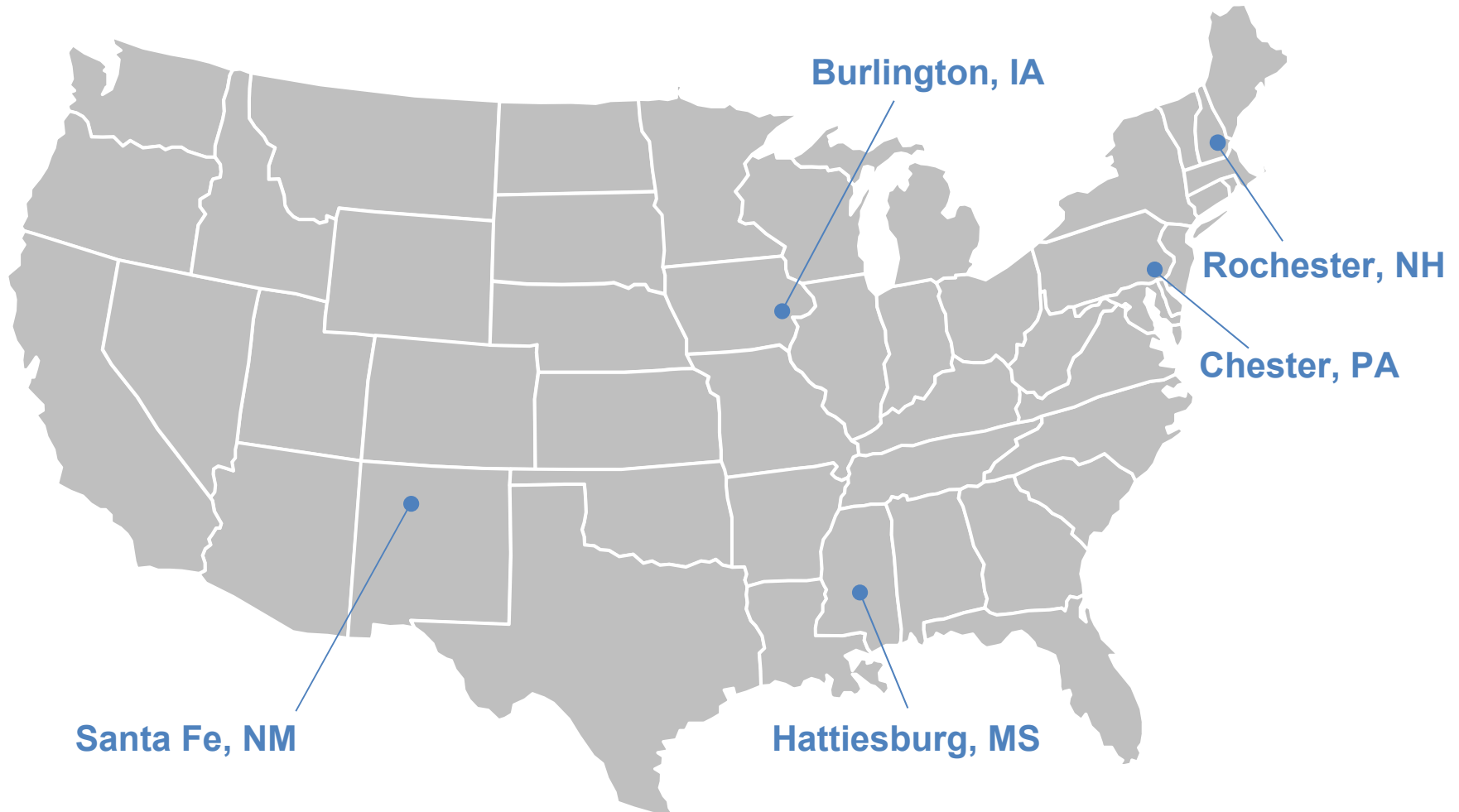
Long-term Stormwater Plan Guide and Toolkit



The Stormwater Toolkit walks the user through the steps to develop a long-term stormwater plan. The steps correspond to those outlined in the Guide.

Technical Assistance Communities

EPA is collaborating with five communities across the country to help develop long term plans.



What challenges does Hattiesburg face?

Water Infrastructure

Lack of electronic stormwater infrastructure mapping

Water, sewer and storm line capacity

Resiliency

Loss of CRS rating

Flooding (Gordon's Creek and Leaf River)

Resiliency for natural disasters (e.g. hurricanes, tornadoes)

Development (public & private)

Identifying opportunities for improved SW management in public projects

Need green infrastructure

Adopting and implementing new development and redevelopment standards

Finance

Budget and funding constraints for stormwater management

Employee turnover and cross-training needs

Only stormwater utility in the state

What does a successful stormwater program in Hattiesburg look like in 20-30 years?



Hattiesburg's Goals



Goal 1: Asset management program



Goal 2: Flood Resiliency



Goal 3: Finance strategy for stormwater program



Goal 4: Community policies for development



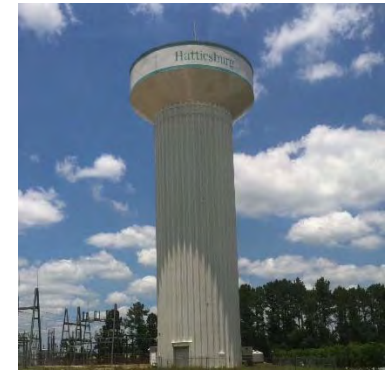
Goal 5: Stormwater opportunities into public projects



Goal 6: Revitalize Hattiesburg waterways



Goal 7: Increase watershed collaboration



Goal 8: "One Water" approach for drinking water, wastewater and stormwater

Questions

R4 Long Term Planning Contact:
Mike Mitchell
Mitchell.Mike@epa.gov

R4 Hattiesburg Contact:
Mara Lindsley
Lindsley.Mara@epa.gov